

C.I.U 70p JULY 2011

# CLUB JOURNAL

THE PAPER FOR ALL C.I.U. MEMBERS

## IT'S OFFICIAL: CLUBS ARE GOOD FOR YOU

ONE of Washington's leading thinkers has backed up what we all know – that being a member of a club is good for you.

Political columnist David Brooks says one of the favourite facts he has uncovered for his new book "The Social Animal" is: "Joining a club that meets at least once a month produces the same happiness gain as doubling your income."

David Brooks combines being a writer on psychology and other science subjects with being a political columnist. His twice-weekly columns in the *New York Times* are so influential that he often receives a call from the White House to find out if they should be worried about what he's writing. Although a conservative he met Barack Obama for the first time in 2005 and urged him to run for President.

He wrote his new book after a conversation with Gordon Brown at the British Embassy in Washington. He was discussing research on the brain when the Prime Minister said to him: "What are

the policy implications of this?" and he found he didn't have an answer?

Although he is talking about social clubs in the widest sense the policy implications for Britain's politicians are obvious: Clubs are places that should be cherished and helped not strangled by red tape and overzealous health regulations.

Club historian Dr Ruth Cherrington, who is writing a history of social clubs said: "This certainly supports everything I've found out doing my research on clubs and also what everyone in the club movement instinctively knows – belonging to a club is good for you! You feel you have a place to go and some people to be with and there are things to do."

"That was the essence of early clubs, what brought them about in the first place and this is what must be kept, to keep things going. There is a decline in sociability and social life due to many social changes, including the Internet, and yet there is still the need for people to feel they

belong to something. All generations are suffering the decline in sociability with resultant social problems of isolation, illness and depression."

### Force for good

Two stories from this month's news underline what a force for good our clubs are. On Page 3 we report how a club in Buckinghamshire has raised more than £1,000 to help a stranger found unconscious outside its doors; meanwhile in Yorkshire members of Westborough Ratepayers Club in Dewsbury rallied round when a war veteran's mobility scooter was stolen by yobs.

Within hours of 86-year-old Thomas Carr's plight being reported in the local paper enough money had been pledged to pay for a replacement – including £400 from the club.

Mr Brooks's book draws on research by social scientist Robert Putnam, who described the effect in his book "Bowling Alone." The title was inspired by the story of 33-year-old black accountant Andy Boschma, who donated a kidney to white retired hospital worker John Lambert; their only link was they belonged to the same bowling club.

When Putnam carried out more thorough research he came to a seemingly obvious conclusion that, while having money helps, "happiness is best predicted by the breadth and depth of one's social connections."



Ruth Cherrington: clubs must be kept going.



SNOOKER legend Jimmy "Whirlwind" White blew into Newcastle Labour Club for a special charity night on the appropriately-named flight number BE147.

He kept a promise by flying to Tyneside exactly a year to the day after a hugely successful charity night at the city's Westfield Social Club raised £5,000 for the Sir Bobby Robson Foundation, the cancer charity founded by the former England and Newcastle United football manager.

Along with fellow pro Tony Drago Jimmy repeated the job by playing five frames of exhibition snooker then taking on a series of players

### Charity reaps the Whirlwind

who had bid for the privilege. It's too early to say how much this year's effort has raised but it is unlikely to match last year's.

"Sir Bobby was a wonderful man," said Jimmy. "I met him once in a players' lounge and he was a true gent. As a sports fan I always appreciated his talent and decency.

"Sir Bobby fought so hard and anyone who has suffered cancer will know what a fight he put up. It's an honour for us to be able to do whatever we can for his foundation and I'm determined that this event will happen every year."

### INSIDE . . .

CLUBS continue to save a fortune thanks to the advice of CIU-recommended companies. **National Accounts – Pages 8,9.**

MILD-mannered barman Grant Worthing has amazed members by winning a national cage fighting title. **Sport – Page 20.**

News .....	2-4, 13
Opinions .....	6
Dransfields / CIU National Quiz .....	7
National Accounts .....	8, 9
Club of the Month:	
Portishead WMC, Somerset .....	10,11
Club Management .....	12-13
Obituaries .....	13
Honours, Club Notices, CHAD Draw .....	14
Classified Advertising .....	14
Club Outings .....	15-17
Saltburn House, Crossword .....	18
Sport .....	18-20
CIU Racing Club .....	18,19



# OLD SOLDIER RONNIE TO RETIRE AFTER 31 YEARS

BURNLEY & Pendle Branch Secretary Ronnie Caple is retiring from the job after 31 years on the Branch Executive, the last 10 as Branch Secretary. He will be succeeded by Michael Woodvine, the Secretary of Nelson Carters' and Motormen's Club.

Ronnie was Secretary of the Works Sports Club before joining the Branch Executive and is still involved with several clubs in the area, most notably Brierfield WMC. He joined the Royal Engineers as a regular soldier in 1952 and later worked in the textile industry as a purchasing manager.

Originally from Somerset Ronnie picked up his Scottish accent from his wife Sheila. The couple, who have been married for 54 years, have two children and nine grandchildren.

"I have enjoyed my ten years as Branch Secretary and I hope I have been able to help clubs with their problems," he said. I wish Michael all the best for the future."

Michael, who is 56, and a former plant and works engineer at Lucas Automotive has been a member of the Nelson Carters' for 18 years and took over as Club Secretary in 2007 after



previously assisting the Club Secretary.

When he became Club Secretary he took our long-distance management course and gained the Club Management

Diploma over a two-year period, achieving a distinction in accountancy in the first year and passing the law and club administration section the following year.

He and his wife Mary have been married for 37 years and have two children and three grandchildren.

Members of the Branch Executive were guests at the 90th birthday party of Bob Savage, their oldest member and possibly the oldest Branch Executive member in the country. A wonderful night was had by all present with about 200 guests enjoying first class entertainment and a first class buffet.

Bob has been a Branch Executive member for 22 years and everyone wished him health and happiness for the future. Last month Bob's picture appeared next to an obituary for Dave Lawrence from the Kent Branch. We apologise to Bob and to Dave's family and friends for this error.



New Branch Secretary Michael Woodvine and (below) Branch Executive member Bob Savage, who recently celebrated his 90th birthday.



## In memory of our Ken



NORTH Lambeth Liberal Club in London has raised more than £2,000 in memory of its former Secretary Ken Walsh, who died suddenly earlier this year.

The club held a charity night attended by Ken's widow Lil, and presented a cheque for £1,683 to Kate Clevely from Macmillan Cancer Support. The total

was subsequently increased to £2,108. Pictured (left to right) are: President Bob Glading, Acting Secretary Roger Johnson, Lil Walsh, Kate Clevely, and Committee members Fred Gibbins and Len Frampton. Committee member Grace Smith also attended but was not pictured.

### Paul's award

NORTHUMBERLAND Branch Secretary Dave Richardson visited Seaton Delaval Social Club and presented a Certificate of Merit to Committee member Paul Eastlake.

Pictured (left to right) are: Dave Richardson, Paul Eastlake and Branch Executive member Rob Yeats.



## HAYES WORKING MEN'S CLUB LATE NIGHT CABARET

- SATURDAY 30th JULY -  
STAYIN' ALIVE (BEE GEES TRIBUTE)  
IAN SCOTT AS TOM JONES AND NEIL DIAMOND  
IAN LOCKYER

- SATURDAY 27th AUGUST -  
ONE NIGHT WITH YOU: MULTI-TRIBUTE SHOW  
FEATURING GENE PITNEY, ROY ORBISON  
AND ELVIS PRESLEY TRIBUTES  
SHOUT (5-PIECE BAND) - COMPERE: MIKI TRAVIS

- SATURDAY 24th SEPTEMBER -  
ROCKY HORROR SHOW  
TURNBACK OUT OF HELL (MEATLOAF TRIBUTE)  
LIAZON (DUO) - COMPERE: TERRI GAUCI

OTHER SHOWS COMPERED BY TERRI GAUCI  
FREE ENTRY (COACHES BY ARRANGEMENT)

PUMP LANE, HAYES, MIDDLESEX UB3 3NB  
ALL SHOWS £8 PER TICKET  
( OVER 18 ONLY )

Bar open until 1.00 am - Doors open 7.00 pm

Coach parties welcome by prior arrangement - please contact Secretary for information and tickets on:  
020-8573-1721





# CLUB BACKS HIGH FLIERS

## £4,000 for Helicopter service

MEMBERS of Rothwell WMC near Leeds have raised more than £4,000 for charity with a series of Saturday night raffles.

The club has set up its own sub-committee to raise money for the Yorkshire Air Ambulance and Sub-committee members Steve Munday and David Booth (right) joined Club President Richard Hoey (centre) to hand over a cheque for £4,150 to fundraising co-ordinators Jim Harris and Kerry Garner.

The Sub-committee has nine members, who are: Steve Munday, Dave



Booth, Annette Wilkins, John Dixon, Dennis Bulmer, Martin Booth, David

Stones, Karen Long and Joanne Kaye.

### Stranger's Fundraiser

MEMBERS of a club in Buckinghamshire have helped raise more than £1,000 to help the family of a stranger found unconscious outside its doors.

Committee members Julia Humbles and Jacki Selleck at Wooburn Green WMC near High Wycombe arranged a barbecue and raffle for 38-year-old Paul Bustin, who was in a coma for a month, and along with a nearby pub raised £1,165.

Branch Secretary John Tobin said: "I think this is fantastic. It's exactly why clubs are such an important part of the community."

Mr Bustin had earlier been a guest at a function at the club; a local man has been charged with assaulting him.

## Pair go potty



TWO members of staff at Farnworth & Kearsley Labour Club in Bolton have gone potty to help wounded service men and women.

Steward Eddie Brookes (left) and barman Sam Beard took to the green baize for a non-stop 24-hour Snookerthon and raised £604 for Help for Heroes. Sam came up with the idea after seeing an advertisement on TV and Eddie jumped at the chance of getting involved.



## Darts marathon Ryton the money

RYTON Social Club near Gateshead has raised more than £2,000 for a local hospital with a raffle and a 12-hour darts marathon.

The Committee, members and guests of the club raised £2,400 for the Patients Comfort Fund at Ward 33 at the Freeman Hospital in Newcastle. They were helped by staff at the Gateshead Housing Company, who held a dress down day.

Durham Branch Secretary Brian Young and Branch Executive member Jimmy Young also visited the club and presented Certificates of Merit to Committee members Maurice Bains and George Shackcloth, to mark 10 years service.

● Club members are pictured looking bright-eyed and ready to go at the start of the 12-hour darts marathon.

### CLUB JOURNAL

Official Journal of the  
Club & Institute Union

Officially audited  
circulation figure 26,254

EDITOR: Mick McGlashan  
253-254 Upper Street, LONDON N1 1RY.  
Telephone: 020 7226 0221  
Fax: 020 7354 1847

email: [information@wmcui.org](mailto:information@wmcui.org)  
website: [www.wmcui.org.uk](http://www.wmcui.org.uk)

Personal subscriptions: £7.00 per year

#### ADVERTISING:

Geraldine Oliver or Mike Lyon  
Powdene Publicity, Unit 17,  
St Peter's Wharf, NEWCASTLE NE6 1TZ.  
Telephone: 0191 265 0040  
Fax: 0191 275 2609  
email: [cj@powdene.com](mailto:cj@powdene.com)

If you have an item of news for  
Club Journal contact Chris Brewis at  
Powdene Publicity on 0191 265 0040.





THE SOUTH EAST Metropolitan Branch celebrated its centenary last year and this year held its 101st annual dinner at Leatherhead & District Social Club in Surrey.

## 101 Reasons to Celebrate

Branch President Trevor Baker is pictured with members of the Branch Executive and former Branch Secretary and National Executive member Bernard Guess (right).

Pictured with them are (left to right): Peter Gale, Dave Legge, Branch Secretary Arthur Millard, Keith Farmer, National Executive member Chris O'Neill, Vice-President Andy Way and Robin Docherty.

Dave Legge also received his 10-year Branch Award at a different function and he is pictured with Trevor Baker, Arthur Millard and Andy Way.

## LEAVING DRINK



DAVID Fletcher, President of Poppleton Road WMC in York, presents a tankard to Jeff Mortimer, who has retired after 19 years' service as Secretary. The club also presented flowers to Jeff's wife Ann.



## FRED'S HALF TON



DURHAM Branch President Colin Armstrong and Branch Secretary Brian Young visited East Stanley WMC and presented former Chairman Fred Wilson with a special Certificate to mark 50 years' service to the club.

Pictured (back row, left to right) are: Branch Executive member Derek

Lumley, Brian Young, Colin Armstrong and Branch Vice-President Eric Campbell.

Front row: Chairman John Dawson, who has 30 years' service, Fred Wilson and new Secretary Steve Richardson, who also received the Certificate of Merit.

## Trent Pottery & Furniture

email:

sales@pubfurnitureuk.co.uk

web:

www.trentpottery.co.uk

tel:

0116 2864911

fax:

0116 2867286



BQ/5 uph in fabric D's below.

Normally £33.90  
Reduced to **£22.90**

BQ/7 uph in fabric D's below.

Normally £36.90  
Reduced to **£22.90**



BQ/2 Black or gold frame in any of the fabrics shown below.

Normally £21.90  
Reduced to **£13.70**

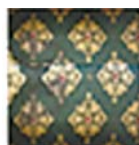


BQ/1 Black or gold frame uph in the D fabrics below.

Normally £21.50  
Reduced to **£12.90**



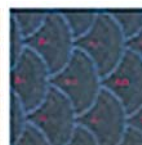
150D



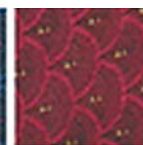
151D



152D



153D



154D

## Jack's Lord honoured



NORTHUMBERLAND Branch Secretary Dave Richardson visited Throckley Union Jack Club and presented a Certificate of Merit to Committee member John Lord. Pictured with them (left to right) are: Branch Executive members Rob Yeats and Steven Kell, and Club Secretary Norah Tinnion.



# Heineken UK



## Sound advice from business seminar



**SUCCESS:** Event organiser Heineken UK Club Specialist Mark Hammond was delighted with the positive feedback from the seminar



**TEAMWORK:** (L-R): Heineken UK Special Accounts Executive Barry Cairns, North East Metropolitan CIU Branch Secretary John Baker, Heineken UK Club Specialist Mark Hammond and North West Branch Secretary and National CIU Vice-President John Tobin

More than 100 representatives from 46 clubs across London, Essex, Kent and Hertfordshire attended the latest Heineken UK Club Sector Seminar held at Rainham WMC in Dagenham.

Organised in support of the CIU's North East Metropolitan Branch, the seminar covered a range of topics including stocktaking, cash registers and EPOS systems, VAT, staffing and employment law, with experts in each field passing on their knowledge to an attentive audience.

John Fuller of John Fuller Stock Auditors explained the importance of good stocktaking covering everything from allowances and wastage, report layout, setting gross profits, till readings, plu reports, estimated receipts versus actual receipts, surplus and deficits, stockholding and staff drinks.

This was followed by Mike Miles from Addwell Business Equipment Ltd who spoke on cash registers and EPOS till systems to the retail and hospitality industry, from the very basic machine to the more sophisticated EPOS terminals.

Before lunch, Ian Spencer of Ian Spencer & Associates Ltd - a former HMRC officer who now runs his own VAT consultancy - covered VAT issues affecting clubs, VAT on costs and

property, an update on the Lineweber case relating to VAT on gaming machines before December 2005, other VAT opportunities and what HMRC looks for in till interrogations.

Being complex and of interest to everyone attending, a question and answer session followed.

The afternoon session was rounded off with a talk from Heineken UK Special Accounts Executive Barry Cairns who presented a 'live' case example he is working on in Scotland which has involved a complete restructure of the staff, staffing costs, new opening times, the issuing of new

contracts, the redundancy process and correct procedures that need to be taken to ensure that the club trades on a profitable basis going forward.

Again, a lively question and answer session followed the presentation.

The organiser of the event, Heineken UK Club Specialist Mark Hammond closed the seminar by summing up the importance of what had been said during the day and was

delighted with the comments he received afterwards.

"Feedback has been very positive with a number of clubs thanking us for organising such an informative day.

"Everyone said that the content covered was of great interest and used, more importantly, that they were able to go away having learnt something which could help in their own club businesses."

North West Branch Secretary and National CIU Vice-President John Tobin says: "The content of the seminar and the turnout were excellent and I have received some very positive feedback from a number of our members.

"In this day and age, it is essential that clubs operate more as businesses and this can only happen through good club management and ensuring that each member of a committee has an understanding of the pitfalls and regulations linked to issues such as VAT.

"It is important for clubs to take full advantage of each and every available opportunity to manage their finances, increase footfall and

therefore sales and profits, and events such as this are invaluable.

"Our thanks go to Heineken UK whose support for the Union as a whole, local branches and individual clubs is first class and very much appreciated."

North East Metropolitan CIU Branch Secretary John Baker says: "To date, this was the best event of this kind in our area and we thank Heineken UK, the speakers on the day and Rainham WMC for playing host.

"Feedback has been good and those who attended certainly went away with a lot to think about.

"There is no doubt in my mind that clubs who didn't attend lost out. It costs very little to learn a lot and I would urge them to go along to future events and indeed, we are already working with Heineken UK to organise another."



**SUPPORT:** (L-R): North East Metropolitan CIU Branch Secretary John Baker, Heineken UK Club Specialist Mark Hammond and Executive Committee Member for the North East Metropolitan CIU Branch Mick Burke

● If you would like to find out more about the benefits your club could enjoy by trading with Heineken UK or to arrange a meeting, please contact Heineken UK Buying Group Director **PETER USHER** on **07831 840330**.



Committed to *your* club

Ring Peter Usher on 07831 840330



# HMRC MUST BE STOPPED – NOW

SOME months ago I wrote an article for *Club Journal* about Her Majesty's Revenue & Customs (HMRC) and its total lack of professionalism and expertise. It was written a little tongue in cheek but conveyed a very serious message and brought no response from HMRC who, I am sure, have access to every word written about them.

That lack of professionalism is now causing our clubs serious difficulties. Hundreds of our clubs have received large rebates of VAT after two court rulings, but they can't spend any of the money because the Revenue refuse to accept defeat. The Linnewebber case proved that HMRC had exacted too much VAT output tax on fruit machines over a period of time. These rebates have been given after five years of wrangling through the High Court and a VAT tribunal and in both HMRC have been soundly beaten.

They are fighting the judgement, however, and have warned that if they win they will want the money back within 30 days of the judgement or they will charge interest from the date they made payment to us. Most commentators think they will not win.

So, the High Court and the tribunal have come to the conclusion the money is ours but HMRC are saying: "Here it is, but use it at your peril." Many of our clubs would want to use the money to wipe debt slates clean.

Say a brewery sues a club that has received a £10,000 repayment and the club says they cannot pay. The judge sees £10,000 sitting in the bank the club refuses to touch for fear of HMRC retribution. It would be interesting to

know how the judge would see the case. Some would want to give their premises a bit of a facelift or improve them in compliance with legislation such as that for the disabled. HMRC says you do it at your peril!

Some clubs may be forced to close down and have their assets distributed among the members. It would seem that HMRC would come after every member who has had a share and claim



By  
**BARRY SLASBERG**  
*South East Midlands  
Branch President and  
National Executive  
member*

status problem after a compliance visit in 2000. I refused to pay and 18 months later – after we had spent almost £5,000 on professional fees – the claim was dropped as HMRC felt they would not win if the case went further.

a proportion from each of them. Of course, they may just go for the richest ex-member and claim on a joint and several basis.

This must surely be the last straw. Since the Inland Revenue merged with HM Customs & Excise they have become an omnipotent monolith that seems to be beyond even the control of Government. Even before merging they acted beyond the law with im-

punity because, when they were found out, any small or medium businesses such as our clubs had no means to exact justice. They have on occasion been so massively incompetent that, had they been private businesses, they would have gone bankrupt many times over – but they have the bottomless pit of the taxpayers' earnings to draw on. Any error by a taxpayer, however, is stamped on with fines far beyond what is reasonable or proportionate.

In the case of my own club, Kingsley Park WMC in Northampton, HMRC claimed £18,000 on an employment

They did say they were fully aware of the basis of our argument almost from day one, but thought they would try for payment anyway. They repaid the professional fees and offered derisory compensation but got off with no further penalties for the worry and distress caused to our whole management.

They did give an unreserved and full apology, but would have taken £18,000 if we had not fought. How many other clubs have been stung this way and not fought?

## OPINIONS

When the banks introduced a fast payment system a few years back so electronic payments made were received on the same day, HMRC did not sign up. They gave three days extra for electronic payment, but payment had to be made three days earlier to arrive by due date. They said they had other priorities! They did say same day receipt would be achieved by paying CHAPS at £18 a throw. Despite progress by the bank, we are in effect paying earlier than we were.

We must demand that HMRC withdraw their protective assessments against all our clubs on the Linnewebber case. It is iniquitous that they are going to the Court of Appeal, and doubtless when they lose, Europe will be the last stop.

Our nature as a movement has never been confrontational, however the continual abuse we are receiving at the hands of HMRC on a whole range of matters must stop.



A SPOKESMAN for HMRC said: "We all make honest mistakes and in administering the tax system we try to allow for that. We do expect businesses to meet their obligations, but our approach is to support those businesses that try to get it right, only coming down hard on the minority that deliberately flout the rules.

"HMRC apologise for any inconvenience caused. However, established procedures exist if customers disagree with a decision or are unhappy with our level of service.

"Customers who disagree with a decision can request a local reconsideration. If still not satisfied, they can submit a formal appeal to an independent tribunal. Further information can be found at: <http://www.hmrc.gov.uk/complaints-appeals/how-to-appeal/>

"If they are unhappy with HMRC's level of service, a formal complaints procedure exists, details of which can be found on HMRC's website at: <http://www.hmrc.gov.uk/complaints-appeals/>. If still unhappy, they can send their complaint and our response to the Adjudicator's Office and ask them to look into it."

## Act together with Facebook

### Dear Secretary,

MY name is Shaun Whitaker and I represent a group on Facebook called "Save the Working Men's Clubs and the Entertainment Industry".

We are asking you directly to get involved in tackling clubs' two main concerns: **cheap supermarket alcohol** and **dwindling membership**. Our group can offer ideas that might help you, or if you are doing well, we can accept and adapt ideas from you that can be passed on to other clubs across the country.

We hope you will join us in writing directly to your MP and asking them to raise the matter of cheap supermarket alcohol in Parliament. The main points are the **unsupervised drinking** that takes place on the streets instead of in supervised

premises with trained personnel, and the **damage done to communities** which comes from loss of custom for licensed premises. not to mention the intoxicated people on the streets of cities, towns and housing schemes.

More importantly you can tackle the problem of dwindling memberships by trying ideas that have worked elsewhere. From many suggestions forwarded to us, it seems one solution is to organise a **programme of events** for at least six months ahead, then have it printed and distributed by hand to all the homes and businesses in your immediate area. By printing between 5,000 and 10,000 leaflets at a cost of £100-£150, you will be able to tell whole communities about your club, giving them reasons to come



along and try out the facilities, especially on an entertainment night.

Other successful ideas we have heard of have seen clubs **increase their budget** for acts and actually make more money than if they cut back on spending. It makes sense and it shows the community that you are open for business and planning ahead with them in mind. Eventually, you can get all your members to supply email addresses as everyone becomes more comfortable with the modern methods. It then costs nothing to let them know what you are doing in the club, even at short notice.

We already have more than 2,200 people connected to our Facebook site. To join in and share ideas, reply to me by email or find us on Facebook.

**Shaun Whitaker,**  
Concert Secretary  
Intake Social, Doncaster  
[shaunwhitaker@blueyonder.co.uk](mailto:shaunwhitaker@blueyonder.co.uk)

**LETTERS to the Editor should be sent to: The Editor, Club Journal, CIU, 253 Upper Street, London N1 1RY or preferably emailed to: [info@wmcui.org](mailto:info@wmcui.org) or [cj@powdene.com](mailto:cj@powdene.com)**



# QUIZ LINE-UP TAKES SHAPE

THE line-up for this year's Dransfields/CIU National Quiz Final in Derby is now almost complete. Only one regional final remains – the Yorkshire final at Hopetown Liberal Club near Wakefield on Tuesday, July 12.

National champions, Maesglas Sports & Social A from Newport, won their own regional final at Bettws Social Club for the first time in three years with a fantastic score of 64 out of 70. Last year's winners of the South Wales and West of England final, Trefelin WMC, Port Talbot, were pipped into third place by the Maesglas B team, who identified a well known personality by this clue alone: "I was born in Surrey in 1940 and was educated at Harrow. I have described myself as a 'right-wing Tory' and I spoke at Robin Cook's funeral where I criticised Tony Blair for not attending."

Other clues went on to list his support of Newcastle United, various reality TV programmes he'd been kicked off, most famously Celebrity Big Brother, and the Sharon Osbourne Show, where he had water thrown over him by the host, and his quote: "Imagine being Mister Vanessa Feltz! Can you imagine anything worse in life?" If you still don't know it, the answer is below.

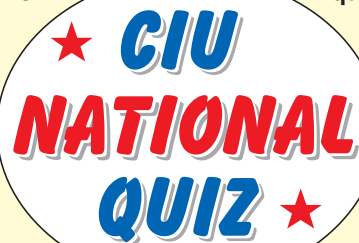
Trefelin WMC is now closed but the team hope to be playing in the final under a new banner. Team member David Clark aka Londinius, a former Mastermind champion, wrote in his blog recently that winning the CIU title was now the modern day version of "Auntie Jessie's toolshed" – a place of awe from his childhood that he longed to look inside but never did.

The quiz also included prizes for the top sports team from outside the top three, won by Morriston WMC from Swansea and for the TV and Films round, which was won with 10 out of 10 by the Maesglas E team. Co-sponsors The Co-operative Bank provided bottles of spirits to the winners of our spot prizes for the closest guesses to such questions as "how many sexual positions were listed in Sir Richard Burton's translation of the Kama Sutra?" (the answer, 64, was rather more than the two suggested by one hopeful).

Monmouthshire Branch Secretary Jim Harrison and Western Counties Branch Secretary Mark Brewer also attended the quiz with Mark's team Chippenham West End B successfully pipping the club's A team. Other local rivalries saw Cwmcarn WMC A finish above Cwmcarn B and Bettws Social B pip Bettws A. As we reported last month Ashford Road Club from Swindon were the winners of the South East regional final ahead of Surrey pair New Haw Club and Shottermill WMC. South East Metropolitan Branch President Trevor Baker presented the winners' cheque to team captain Tim Westcott. The North East final was held just

before we went to press and won by Gosforth Empire with Newbottle WMC second and Innisfree Social third. A full report will appear in our next issue. Three teams from each regional final qualify for the National Final, which will be held at Alvaston & Crewton Social Club on the afternoon of Sunday, September 18.

- The final clue of our Who am I round – for one point – read: "I am a racing pundit on Channel 4, noted for my eccentric garb and doing tic-tac to the camera." It is, of course, John McCrick.



Above: Maesglas captain Trevor Parry receives the winners' cheque from Gareth Evans of sponsors Dransfields with (left to right): Jim Harrison, Gordon Galliford, Mark Brewer, Paul Davies, Colin Lloyd and Richie Parnell.



Left: Paul Davies of the Co-op Bank presents a spot prize of a bottle of vodka to Gaynor Badham of Cwmcarn WMC.



Below: Trevor Baker congratulates Tim Westcott watched by Paul Davies (left) and team mates Kevin Ashman, Keith Andrew and Brian Wilkins.

COMPUTER AIDED DESIGN

BARS CARPETS FURNITURE



call: 020 8541 4471

FULL INTERIOR REFURBISHMENT



www.easeco.co.uk

47-51 Hawks Road, Kingston upon Thames, KT1 3DS

contact@easeco.co.uk



# NATIONAL ACCOUNTS

IN ASSOCIATION WITH **CIU Insurance Services**

## NATIONAL ACCOUNT SUPPLIERS LIST

Here is a list of the current Union-recommended suppliers/  
National Account holders:

**Access2All** (H&S/Disabled access advice)  
Mick Rickwood: 07862162276/01912092906.  
michael@access2all.co.uk  
**Auditel** (utility consultant)  
Giles Branson: 07947039382. Giles.Branson@auditel.co.uk  
**Aon** (Club Insurance Services)  
Andy Kitchener: 07989984260. andrew.kitchener@aon.co.uk  
Stuart Hall: 07983576565. stuart.hall@aon.co.uk  
Gareth Butler: 07779702240. gareth.butler@aon.co.uk  
**Bissett Kenning & Newiss** (rating advisors)  
Cathrine Moore: 0191272 5551.  
Cathrine.moore@bissett-kenning.co.uk  
**BOC Sureserve** (gas)  
Richard Nixon: 07768193174. Richard.nixon@boc.com  
**Co-operative Bank**  
Paul Davies: 07803212331. Paul.davies@cfs.coop  
**Cellarbright** (line cleaning)  
Hance McGhie: 07740367029. hmcghie@cellarbright.co.uk  
**Coventry Silvercraft** (trophies etc).  
Marie/Andy Oakley: 02476223374.  
andy@coventry-silvercraft.co.uk  
**Dransfield Novelty** (gaming machines/lottery machines and  
tickets)  
Alan Jackson: 01132 444 555.  
Alan.jackson@dransfieldsltd.co.uk  
**Heineken UK**  
Peter Usher: 07831840330. peter.usher@heineken.co.uk  
**Thompson & Bryan** (loss assessors and valuers)  
Derek Lamb: 0121 428 4000  
**Walkers Snacks** (crisps and soft drinks)  
Angie Sparling: 07740640425. Angie.sparling@pepsico.com

THE Committee at Acomb Working Men's Club in York have just celebrated a rare event. They have turned regular losses and debts of £173,000 into a surplus of £53,000!

CellarBright installed the system at Acomb in January. The first saving was made immediately as lines were cleaned while the club was open and the

## GET IN LINE TO SAVE

This has been achieved by scrupulously managing costs, running profitable events and embracing money-saving ideas. As well as installing a heating and control system from Envtec they have saved a fortune by using the CellarBright Automatic beer line cleaning system, which Club Secretary John Lane saw for the first time at the CIU Beer & Trades Exhibition in Blackpool.

The CIU have endorsed CellarBright's claims of saving three quarters of the beer normally wasted in line cleaning. Such claims are generally greeted with a good deal of healthy scepticism and the Acomb management team were no different. But when they visited the Ex-Service and Social Club at Bolton-on-Deane near Barnsley, they were able to see the lines cleaned in under seven minutes and taste the beer before and after. Steward John Lewis also told them about his experiences over the last two years and the result was that

beer normally thrown away was sold. With 44 lines it used to take around 10 hours to clean but all this work is now done by the bar staff while the club is open. It all adds up to a saving of £3,640 a year on top of the beer saving of £500 per month to date – or £6,000 in a year at wholesale prices. John and the committee are delighted. The quality of beer is still first class and apart from the first week or so when the staff were getting used to the new way of working, the club has had no complaints.

"The phrase 'waste not, want not' has never been truer," says John. "Any club can benefit in the same way as us. All they need is an open mind as we know that beer lines can be cleaned quickly and effectively with a little co-operation and understanding from staff and members. "The CellarBright system really does work and the club and members are benefiting from the savings".

**CellarBright**  
for clean beer & clear profit!

## SOARING ENERGY BILLS

With gas prices reported to be increasing this year by a colossal 20% to a record high, the question on every club's lips is "Can we afford it?" Find out today if there is a more cost-effective way to heat and cool your club.

**With our help these CIU Clubs continue to make SUBSTANTIAL SAVINGS:**

**Acomb WMC - Saving £17,000 per year**

**Enderby & District Social Club - Saving £5,000 per year**

**Crookes Social Club - Saving £9,000 per year**

**George V WMC - Saving £9,000 per year**

**ENERGY EFFICIENCY FUNDING NOW AVAILABLE, BROUGHT TO YOU BY CARBON TRUST & SIEMENS**

Call Envtec Services, your CIU approved national accounts supplier, today on **01455 821177** or visit **www.envtecservices.co.uk** for further information



**Envtec  
Services  
Limited**

**CARBON  
TRUST**



# NATIONAL ACCOUNTS

IN ASSOCIATION WITH **CIU Insurance Services**

## YOU CAN STILL BE GREEN AND SAVE YOUR CLUB A FORTUNE



Enderby Social Club Secretary Bob Mackness celebrates saving £5,000 a year with Mia Harris from Envtec Services.

OVER the last 18 months National Account company Envtec Services Ltd have been working closely with the CIU National Executive and the Carbon Trust to help reduce the amount of energy being used for heating and lighting.

Combining the expertise of Envtec Services with funding from the Carbon Trust has saved £500,000 in fuel costs for the participating clubs in just 12 months. No wonder the interest in the project is growing with more clubs than ever looking to change their old equipment for new energy-efficient equipment and, of course, start saving for themselves.

Among the clubs making great savings with the help of Envtec Services are:

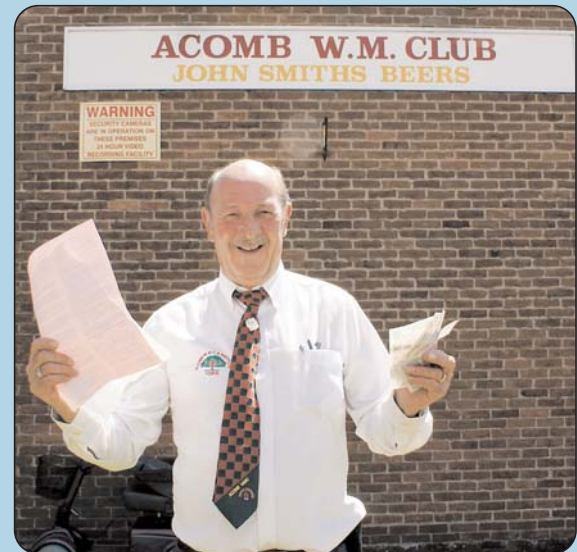
- **Acomb WMC, York, who have saved £17,000 per year;**
- **Enderby & District Social, Leicestershire, who have saved £5,000 per year;**
- **Crookes Social, Sheffield, who have saved £9,000 per year.**

Unfortunately the funding from the Government ran out on March 28, and many clubs were left disappointed not to be able to take advantage of new energy-efficient equipment. It appeared to be the end of low-cost funding but, after lengthy discussions with the Carbon Trust, a new Energy Efficient Funding Scheme has been launched; and with the right guidance this funding is now available to CIU-affiliated clubs.

“Far too many clubs don’t look close enough at how much money they spend on fuel,” says Envtec Director Phil Towndrow. “Gas and electricity prices are soaring and unless clubs take action now the effect on the overhead in coming years could be devastating.

“It costs nothing to find out if and how much money your club should be saving. The results are often surprising and, as with the cases above, can provide a healthy boost to a club’s finances.”

For further information see Envtec’s advertisement on the page opposite.



Acomb WMC Secretary John Lane has seen fantastic savings on both utilities with Envtec and on beerline cleaning with Cellarbright. Below: Ken Yates from Crookes Social.



for clean beer & clear profit!

Do you need to reduce your costs?

Can you really afford to continue pouring beer down the drain?

### Benefits of the Cellarbright System

- |   |                                   |
|---|-----------------------------------|
| Enables the sale of at least 75% of beer that is usually wasted | It is fully automated             |
| Simple, quick & easy to use                                     | 5 to 7 minutes to clean a line    |
| Suitable for all dispense equipment                             | Free Flow, Metered & Beer Engines |
| Quality of beer maintained and improved                         | Health & Safety and Hygiene       |
| Independently tested by a Professor in Brewing                  | No disruption                     |
| New Patent pending technology gives outstanding performance     | Optional Remote Monitoring        |

For a no obligation survey and quotation please contact us  
 Telephone: 0845 626 2290 Email: sales@cellarbright.co.uk  
 www.cellarbright.co.uk

## READ US AT HOME . . . and pay less

Here’s your chance to have your own personal copy of *Club Journal* for less than you’d pay for it at the club.

Fill in this form to obtain a year’s supply of *Club Journal* for £7.00. This means that not only will we send you your copy post-free to your home if you wish, but two of the 12 editions will be yours for FREE.

Please send me a year’s supply of *Club Journal*. I enclose a cheque for £7.00 made payable to the Club & Institute Union.

Name: .....

Home Address: .....

.....

Club: .....

.....

Please send your order to Club Journal,  
 Unit 17, St Peter’s Wharf, Newcastle upon Tyne NE6 1TZ.



# IT'S NOT JUST BEER AND SKIT



The signed Bristol Rovers shirt in memory of Alan Parnaby hangs in the TV room.

**B**EEER and skittles are the main attractions of Portishead WMC but there's a lot more to it than that.

For a start beer and lager only accounts for around 80 per cent of the long drinks sold with a sizeable proportion of members enjoying pints of locally-produced cider, such as Cheddar Valley, Blackthorn and Thatcher's Gold.

"We stocked one called Mendip Magic," explains Club President Mike Farrell. "We couldn't sell much of it though because people just fell over after two pints and couldn't drink any more." In contrast the club also stocked what they called Boys' Beer, Webster's Bitter at 3.5 per cent, which you could cheerfully drink all day.

Members' tastes have moved on

and as well as enjoying mainstream beers like John Smith's, they have also developed a taste for real ale.

"We introduced it a few months ago," says Vic Cross, the club's longest serving Committee member, "and it's really kicked off." A visit to

the local Butcombe Brewery is fully booked and the club regularly offers Sharp's Doom Bar, a Cornish brand that has recently been bought by

Molson Coors, who along with Heineken UK are the main suppliers

The club's skittle teams rejoice in such names as the Plonkers, the Crackerjacks and the Weekend Alcoholics so it's no surprise there was a lively choice of names for the club when it was started in an old mill on the Bristol Road in 1920. A group of members also campaigned for it to be called the Pith after the Agapithonics, a group that espoused free love; the club's minutes record that they were "disappointed" when their suggestion was turned down in favour of Portishead Workingmen's, which is often rendered as Possett in the local accent, so much so that the club's women's skittles team call themselves the Possett Girls.

The skittle alley is the club's pride and joy and probably brings more people into the club than anything else – including the beer.

The club has four men's teams and three women's teams. In the summer the club also organises its own six-a-side team four nights a week but they are so keen on their skittles here they've played at the top of Snowdon and at the bottom of Wookey Hole caves – and raised £7,000 for Marie Curie Cancer Care in the process.

The teams not only had to get themselves to those high and low places, they had to transport the skittle alley there as well – though fortunately at Snowdon they had the help of the mountain railway.

The club built an extension next to the concert room to house the alley 30 years ago and the current Canadian maple alley was installed 10 years ago and recently refurbished.

But it's not quite all beer and skittles. The club is a thriving centre of live entertainment with its downstairs music room always busy on a Saturday night. Treasurer Mike Gale recalls the nights when the Wurzels, formerly led by Portishead-born Adge Cutler, and later their "Scrumpy & Western" tribute band the Mangledwurzels packed the place out. Bingo is only played on Tuesday nights but the room is also available for hire to club members and for charity

nights, which have benefited such causes as the local lifeboat, St Peter's Hospice and Portishead's Christmas lights – the best in the West Country.

On August 6 the club plans a fundraiser in aid of Help for Heroes, and two weeks later it will be holding a special weekend 75th birthday weekend with a barbecue and children's events organised by Toni Butler, one of three women to have joined the Committee since the club adopted the Interpretation Rule in 2007. It was in 1936 that the club bought the current premises in Slade Road with the aid of a £1,000 loan from Ushers Wiltshire Brewery, paying it off in 1947 with a final payment of £201 and 14 shillings.

*Club Journal's featured Club of the Month:*  
**PORTISHEAD WMC**

**PORTISHEAD**  
in Slade  
Portishead, North  
BS20 6BW is  
Western County  
Telephone: (01274)  
Website:  
www.portishead  
workingmens  
Beer  
Molson Coors  
Heineken

## Money spinner

Dransfields



Club Lotteries

Fantastic Dranscash deals on all Pull Tab tickets

Customers love Pull Tab Lotteries, so Dransfields gives you the best – **Lucky Dip Club Lotteries. No licence, no rent, no VAT** – just big profits and great service from the UK's largest independent supplier of gaming machines.

- Guaranteed rapid response service
- The best machines with regular upgrades
- Local engineers on call all year round
- Gaming machines, jukeboxes, lottery products, pool tables, multi-game quiz machines



www.dransfields.com

Get onto a winner! - call 0845 094 1495



Members enjoy a live match in the TV room. Two different sports can now be watched at the same time.



# TITLES IN THE WEST

When the club moved there as tenants downstairs was the stables and upstairs was used for ballroom dancing lessons. These days the music room and skittle alley are downstairs with the lounge, TV room and games room upstairs – though that’s level with some local gardens.

Sky TV and ESPN are available in the TV room but with rugby union as popular as football in the area it’s a good thing that more than one sport can be shown at the same time. Pride of place on the wall in the TV room is a framed Bristol Rovers football shirt, which was signed by the team in memory of club member Alan Parnaby.

A recent development in the games room saw the club replace one of its two full-sized snooker tables with a pool table, which has already paid for itself. Mike Farrell recalls that when they sold the old snooker table one of the members put them in touch with a slate quarry in Wales.

**HEAD WMC**  
**de Road,**  
**North Somerset**  
**is part of the**  
**unties Branch.**  
**(01275) 842428**  
**bsite:**  
**ortishead**  
**ensclub.co.uk**  
**cers:**  
**on Coors,**  
**eken UK**

“They agreed to buy the slate back from us and when we drove up there with it they knew straight away that the slate had come from that actual quarry. “They were absolutely delighted. You’d think they’d won an Olympic gold.”

A couple of Mike’s distinguished predecessors as president were Tommy Jay, who was a journalist for *Punch* and architect John Bath.



Membership was around 1,000 but is now only 400 as Portishead is now mostly a dormitory town for Bristol; in those days it had factories, docks and power stations and the depression of the late 20s and 30s meant the club opened at 9am to give the unemployed somewhere to go. A big coke stove inside the front door used to keep people warm and

Steward Boxer Brown used to use it to cook snails. It took until the recession year of 1980 for the club to join the CIU but the club still finds the services and advice given by the Western Counties Branch Secretary Mark Brewer to be invaluable. “With only just over 400 members it’s tough,” says Mike. “But with the help of the CIU we’re holding our own.” ●



Committee member Toni Palmer enjoys a game of skittles.

Left: The Committee, (left to right): Graham Walker, Vic Cross, Colin Willis, Ted Cherry (Secretary), Gerry Watts, Kevin Walker, Mike Gale (Treasurer), Toni Butler, Mike Farrell (President) and his wife Deirdre (Trustee).

G.A. SIDE.		WINNERS
A	B	
1986	P. DUCKS	JOKERS
1987	P. DUCKS	JOKERS
1988	TELSTARS	P. DUCKS
1989	TELSTARS	P. DUCKS
1990	ALCOHOLICE	P. DUCKS
1991	JOKERS	P. DUCKS
1992	GS'ERS	P. DUCKS
1993	P. DUCKS	P. DUCKS
1994	C/JACKS	P. DUCKS
1995	P. DUCKS	P. DUCKS
1996	M. PICKETS	P. DUCKS
1997	P. DUCKS	P. DUCKS
1998	P. DUCKS	P. DUCKS



Steward Chris Magson and staff Margaret Cherry and Ellie Punter (right). Left: the club’s remaining snooker table.



# club MANAGEMENT

IN ASSOCIATION WITH The co-operative bank

## BE SURE WHEN YOU SIGN ON THE DOTTED LINE . . .

**W**HEN I was a Branch Secretary I received many telephone calls from club officials concerned about contract documents. The paperwork that worried most officials was the documentation issued by brewery suppliers. Since becoming your General Secretary in 2009 I have found that clubs nationally continue to face a wide variety of intimidating written agreements. In light of this here are some tips to keep you on the straight and narrow.

When it comes to club lending and trading agreements, there are two main types of document presented. One is a contract setting out terms of the loan or supply deal and the other is where the club confirms it will provide security for money it owes. While the content of these documents vary from one lender or brewery to another, there are some general principles to keep in mind.

First, you need to consider whether the club really needs to provide security for a liability. There is no law that says a club must mortgage its premises to secure a loan – neither do individuals involved with the running of a club have to give personal guarantees for its debts. In

### TEN is a knockout

BOXING fans in the North East were left disappointed when an eagerly-awaited boxing show had to be called off because club officials did not apply in time for a Temporary Events Notice (TEN).

About 15 boxers from a Tyneside boxing club were due to take on young fighters from rival clubs in front of more than 200 fans at a Union-affiliated social club. Tickets had been sold and cash spent on posters and other publicity material.

The secretary of the boxing club blamed “council red tape” but as a Council spokesman said: “The council must follow Government legislation, which states applications must be received at least 10 clear working days before the event. This does not include the day the notice is given or the day of the event.”



**General Secretary MICK McGLASHAM, takes a look at issues surrounding club contracts and gives his guidance on how best to deal with them.**

the current economic climate it is, however, very challenging to obtain a loan facility without some form of security.

This means how your club proceeds depends upon the sort of bargain it can arrange with a lender and my advice is to shop around. Even when you are facing financial hardship it is important to present a comprehensive business case to secure those important funds and wherever possible, involve your accountant, solicitor or a licensed financial adviser who will help ensure your pitch is watertight.

If a loan offer is received, then make sure you understand what security is being demanded in return. Individuals should think long and hard before giving any personal guarantee for a club liability. That applies as much to signing a maintenance agreement for a sound system as to promising to stand as a guarantor for a club loan to consolidate debts or carry out refurbishment.

What about the terms and condi-

tions of the prospective loan? Banks present very technical terms in their paperwork. Despite the fact brewery suppliers should be friends with our clubs (after all, they make money out of our members), their written

agreements are equally complicated and I for one would be naive if I thought I understood each aspect of every clause.

I have spent many hours reading lengthy clauses in brewery trading agreements. Lawyers argue about the meaning of such terms often leading to unnecessary costs. My advice is to make sure you and your members understand at the start of the relationship what the club is being asked to sign up to. That means being aware of the penalties, interest and charges that can be claimed back. If you or your family have had a mortgage for a house then you will no doubt have come across the penalties that can become payable if the house is sold, or the mortgage swapped to a new lender during a fixed term. A loan or trading arrangement with a club often contains similar provisions.

If a club gets into difficulties with repayments it can be very upsetting and time-consuming for all involved, from the Management

Committee to members alike. Think about a trading agreement with a brewery – is the club able to keep to its obligation to buy the minimum amount of product? If not, what are the financial consequences?

Make sure there are no nasty surprises. Negotiate the penalties that can be imposed when there is a default before that agreement is put in place. Arguing when things have gone wrong is a battle that rarely can be won and incurs expense at the worst time.

### Misunderstanding

So, before the club executes any agreement, make sure each member of the Committee understands what is at stake. Best practice would be to share the details with members. A summary of the proposed commitment can be prepared by a professional adviser (or the brewery or lender) and placed on the club notice board. If there are penalties, ensure these are set out in plain English to avoid misunderstandings from the outset.

Remember that any binding arrangement a club intends to enter into should be discussed at committee. If the Committee agrees to a loan, mortgage or any financial commitment then there should be a clear written minute made. This should explain why the arrangement is of benefit to the club and what alternatives have been considered. The Committee’s approval should also be documented to allow your secretary and two authorised officials to enter into the agreement on behalf of the club without any fear of reprisals.

The danger of “small print” terms in contracts and mortgages remains a significant issue for CIU clubs.

With a bit of preparatory work at the start – and professional advice as and where required – everything should run smoothly and those concerned can have peace of mind that all potential consequences have been planned for.

The co-operative bank  
good with money

We're a hard act to follow when  
it comes to cash

Our **Business Current Account – Cash Tariff** offers one of the lowest cash depositing fees on the market\* plus the convenience of paying in cash at the Post Office®.

We're top of the bill for all your cash needs.

To find out more  
**0800 0282 282**  
co-operativebank.co.uk/business

Lines open  
8.30am to 5pm  
Mon to Fri  
ref: 39502



\*Source: Business Moneyfacts February 2011 – based on depositing £3,000 a month at the Post Office®. The Co-operative Bank is authorised and regulated by the Financial Services Authority (No. 121885), subscribes to the Lending Code, is a member of the Financial Ombudsman Service and is licensed by the Office of Fair Trading (No. 006110). The Co-operative Bank p.l.c., P.O. Box 101, 1 Balloon Street, Manchester M60 4EP. Registered in England and Wales No. 990937. Calls may be monitored or recorded for security and training purposes. For BT customers, calls to 0800 numbers are free. Call charges from other companies may vary and you may want to check this with your service provider.





SOUTH Yorkshire Branch Executive member David Lovelands was a guest at West Green WMC when the Monk Bretton Branch of the Royal British Legion staged a memorial concert for Committee member John Keen, whose

obituary was featured in our January issue.

John's widow Ruth accepted the Certificate of Merit on his behalf and at the same time David presented a Certificate of Merit to Gil Martin and a Long Service Award to Steve Simms.

## Rent and Stewards

CHARGING stewards rent on accommodation should be avoided as it not only creates a tenancy situation but a tax liability for both the club and the steward.

Instead the club should ensure that all employees who benefit from living accommodation do so as "service occupiers." They pay no rent and have no security of tenure. Occupation ceases on termination of employment.

If the steward paid rent and you wanted him to have the same post-tax income you would have to increase his salary. He then pays tax and you pay extra National Insurance on the extra salary as well as tax on the rental income.

The only exception is that you need to charge for gas, electricity and other services paid for and provided by the club. This does not count as tenancy but the supply of free heating and lighting is regarded as a taxable benefit so the club should charge the Steward a "contribution towards accommodation expenses."

## CLUBS MAKE YOU HAPPY



More remarkably joining and participating in one group cuts in half your odds of dying next year – the exact equivalent of giving up smoking. So as a rough rule, being a member of a club and a smoker is as good for you as being a non-smoker and not a club member.

Putnam's book introduces a concept called "social capital." Among his other statements are:

- Every ten minutes of commuting reduces all forms of social capital by 10%.
- Watching commercial entertainment TV is the only leisure activity where doing more of it is associated with lower social capital.
- Getting married is the "happiness equivalent" of quadrupling your income.

We're not sure everyone would agree with the last statement but he's certainly right about clubs.

## OBITUARIES

### GUS RICHARDS

PENYGRAIG Labour Club in the Rhondda Valley is mourning the passing of former Chairman Gus Richards. He had been a member of the club for more than 50 years and served on the Committee for 40 years, retiring as Chairman ten years ago.

Gus lived all his life in the Rhondda apart from time spent on National Service in Germany. He was well known and well respected not only in the local community but throughout South Wales.

He took a keen interest in the sporting activities of club life and was a member of the club skittles team. His interest in snooker took him on many trips around Wales and England within the club movement and he must have visited nearly every club in the South Wales Branch.

He was a founder member of the local boys' club, which he supported all his life. He also enjoyed a singsong and never failed to give a good rendition of his favourite song "Danny Boy."

Gus's memory will be cherished by all who knew him and he will be sadly missed. Our thoughts go to his daughter Margaret, son-in-law John, granddaughters Danielle and Shauna, and all his family.



### TOMMY COOKE

LOW Spennymoor & Merrington Lane WMC in Co. Durham regret to announce the death of Mr Thomas Cooke at the age of 73.

Tommy served on the board of management for a lot of years doing different jobs; the one he liked the most of all was Concert Secretary.

Sincere sympathy from the Committee and all his friends goes to his family. A true gentleman and character, he will be missed by all.



### JOHN SHANNON

IT is with the deepest regret that Mill Hill WMC in Blackburn report the death of their Secretary John "Shanny" Shannon at the age of 56 after a long illness.

Shanny served on the Committee for ten years and was Secretary for five of them. He was totally devoted to the club, his wife and his family and will be sadly missed by all.



### GERALD SILCOX

IT is with deepest regret that Samlet Social Club near Swansea announce the sudden death of their chairman Gerald Silcox.

Gerald had been an active member of the club for more than 40 years and had served on the Committee for most of that time. Even when not on the Committee his help could always be relied upon.

Gerald became Chairman two years ago following the death of Bryan Owens and immediately became a member of the Swansea & District Ward of the South Wales Branch.

His contribution to the club over his short term as Chairman was out of proportion to his time in the job and all who knew him will sadly miss him. Deepest sympathy goes to his widow Yvonne and his family from the Club Committee and all the members.



## Andrew Dane – The Business Medic



cordially invites you to join him 'on-line' for a series of Employment Law Webinars (Seminars on-line).

*They're informative and fun – it's easy and it doesn't cost you anything.*

You can ask questions and we'll answer them there and then.

No lectures, no pressure and it's done at a time that suits you. e.g. Sunday mornings.

Simply log on to this address and follow the instructions

<http://lawnav.tv/listings-2>  
Ring 07791 286983 for more details

## HAYES STACKS THEM IN!

Regular advertisers Hayes WMC in West London report terrific ticket sales for their monthly Cabaret Shows – thanks in part to their regular ad on Page 2 in *Club Journal*.

Club Secretary Bob Daybell says: "We're delighted.

The shows are selling out every month and we are getting a good response from other clubs who see the ad in the *Journal*."

It's proof that advertising on a monthly basis does the business!

Find out how a regular advertisement in *Club Journal* could benefit your club or your company.

CONTACT Mike Lyon on (0191) 4887142 or Geraldine Oliver on (0191) 2650040.





# HONOURS

## Branch Award

**Branch Executive Awards**  
 Ronnie Caple, 31-year Service Award, Burnley Branch.  
 Dave Eastwood, 10-year Service Award, Kent Branch.

## Special Award – 50 Years

George Duke, East Bowling I.L.P Club, West Yorkshire Branch.

## Distinguished Service Award

Alan Peacock, Old Shildon WMC, Co. Durham.  
 Brian Cain, Dipton Social Club, Co. Durham.  
 Anthony Fyre, East Bowling I.L.P Club, West Yorkshire Branch.  
 Robert Thirlaway, Usworth & Dist WMC, Co. Durham.  
 Michael McGlasham, Chilton & Windlestone Club, Co. Durham.

## Long Service Award

Anthony Shackleton, Ashstead Village Club, South East Met Branch.  
 George Lawcock, Hyde Park Club, Doncaster Branch.  
 Leonard Bell, Fishburn WM Social Club, Co. Durham.  
 Terry Craggs, Fishburn WM Social Club, Co. Durham.  
 Neville Blenkinsopp, Hunwick & Dist WM. Club, Co. Durham.  
 Ian Richardson, Hunwick & Dist WM. Club, Co. Durham.  
 Edward Bateman, Belle Vue WMC (Crook), Co. Durham.  
 Rodham Hall, New Hesledon Social Club, Co. Durham.  
 Michael Bradley, Park View WMC, Manchester Branch.  
 Desmond King, Severn Bridge Social Club Ltd, Monmouthshire Branch.  
 John Richardson, Swarland WMC, Northumberland Branch.  
 Barry Dews, Cheylesmore Social Club, Warwickshire Branch.  
 Paul Gaskin, Albrighton Sports & Social Clb, West Mids Branch.  
 Peter Sands, Dartford WMC, Kent Branch.  
 Michael Edward McNaughton, Wallsend Ex-Service WMC, Northumberland Branch.  
 Martin Tustin, Bedworth Ex-Servicemen's Soc WMC, Warwickshire Branch.  
 Nigel Waterhouse, East Bowling I.L.P Club, West Yorkshire Branch.  
 Stanley Thornton, East Bowling I.L.P Club, West Yorkshire Branch.

Richard Bairstow, East Bowling I.L.P Club, West Yorkshire Branch.  
 Sydney Smith, Glendale Social Club, Co. Durham.  
 James Quinn, Usworth & District WMC, Co. Durham.  
 Edward Blake, Glendale Social Club, Co. Durham.  
 Alan Clasper, Newburn & District Mem Club, Northumberland Branch.  
 Kenneth Connelly, Canton Liberal WMC, South Wales Branch.  
 John Holmes, Cynon Valley Club & Inst, South Wales Branch.  
 Peter Kigby, Cheslyn Hay Comm S&S Club, West Midlands Branch.  
 Colin Betts, Cheslyn Hay Comm S&S Club, West Midlands Branch.

## Certificate of Merit

Clifford Cooke, Hyde Park Club, Doncaster Branch.  
 Les Howarth, Redhouse WMC, Co. Durham.  
 John Thompson, Belle Vue WMC. (Crook), Co. Durham.  
 Robert Ayre, Belle Vue WMC. (Crook), Co. Durham.  
 David Stones, Bishop Auckland WMC, Co. Durham.  
 Brian Anderson, Sandhole Club, Co. Durham.  
 Ronnie Donkin, Redhouse WMC, Co. Durham.  
 David Mulley, Redhouse WMC, Co. Durham.  
 Keith Couzens, Relton Terrace Club, Co. Durham.  
 Colin Spoor, Relton Terrace Club, Co. Durham.  
 Kenneth Sugden, New Hesledon Social Club, Co. Durham.  
 Neil Anderson, New Hesledon Social Club, Co. Durham.  
 David Blackie, Holmeside Hall Labour Soc Club, Co. Durham.  
 Ann Maloney, Belle Isle WMC, Leeds Branch.  
 Ronnie Smith, Garforth WMC, Leeds Branch.  
 Alistair McCubbin, Annitsford Pioneer Club, Northumberland Branch.  
 Leslie Sadownik, Togston Terrace Social Club, Northumberland Branch.  
 Raymond Fearn, Athersley Social WMC, South Yorkshire Branch.  
 Brian Wilcock, Gawber Rd WMC, South Yorkshire Branch.  
 Leonard Peerless, Belvedere Social WMC, Kent Branch.  
 Shane Warner, Ramsgate WMC, Kent Branch.  
 Julie Maunders, Ramsgate WMC, Kent Branch.  
 Lorraine Harrison, Monks Road WMC, Doncaster Branch.  
 Louisa Merrin, Denaby Main Institute WMC, Doncaster Branch.  
 George Parks, Balby Road

Recreational WMC, Doncaster Branch.  
 Roy Barber, Balby Road Recreational WMC, Doncaster Branch.  
 Anthony Pringle, Ryton Social WMC, Co. Durham.  
 Niki Watson, Ryton Social WMC, Co. Durham.  
 David Gleghorn, Dipton Social WMC, Co. Durham.  
 Sue Hartshorn, Citizens WMC, Leicestershire Branch.  
 Peter Mustin, Citizens WMC, Leicestershire Branch.  
 Alexander Keay, Enderby & Dist Social WMC, Leicestershire Branch.  
 Robert Mackness, Enderby & Dist Social WMC, Leicestershire Branch.  
 David Vear, Enderby & Dist Social WMC, Leicestershire Branch.  
 Linda Mackness, Enderby & Dist Social WMC, Leicestershire Branch.  
 Jean McMillen, Gosforth Combined Ex-Ser WMC, Northumberland Branch.  
 David McWilliams, Gosforth Combined Ex-Ser WMC, Northumberland Branch.  
 John House, Gosforth Combined Ex-Ser WMC, Northumberland Branch.  
 Kevin Sample, Allotment Social WMC, Northumberland Branch.  
 David Balmer, Allotment Social WMC, Northumberland Branch.  
 Ken James, Forest Hall Club & Inst, Northumberland Branch.  
 Rosemary Walker, Wakefield Carlton WMC, Wakefield Branch.  
 Steven Peake, Bedworth Ex-Servicemen's Soc WMC, Warwickshire Branch.  
 Christopher Spooner, Brinsworth Social Club Ltd, South Yorkshire Branch.  
 Mark Fergusson, Brinsworth Social Club Ltd, South Yorkshire Branch.  
 John Hill, East Bowling I.L.P Club, West Yorkshire Branch.  
 Brian Mortimer, East Bowling I.L.P Club, West Yorkshire Branch.  
 Graham Lane, Canton Liberal WMC, South Wales Branch.  
 Jeremy Parle, Canton Liberal WMC, South Wales Branch.  
 Christopher Philips, Canton Liberal WMC, South Wales Branch.  
 Raymond Sullivan, Canton Liberal WMC, South Wales Branch.  
 Leonard Pells, Cheslyn Hay Comm S&S Club, West Midlands Branch.  
 Nigel Povey, Cheslyn Hay Comm S&S Club, West Midlands Branch.  
 Ronald Jones, Cheslyn Hay Comm S&S Club, West Midlands Branch.

● The Distinguished Service Award is for those rare club members who have served their club in an official capacity for at least 40 years.

The individual applying for the Award must have held an Associate and Pass Card for at least the last 20 years; and his club must have been affiliated to the Union for at least the last 25 years.

The Long Service Award is granted to club members who have given at least 25 years' service and the Certificate of Merit to those who have given at least 10 years' service.

## CHAD winners

The June CHAD draw winners are:

Ticket no:	Amount
8906:	£1500
14642:	£1000
16370:	£100
21692:	£100
32254:	£100
42825:	£5000
51489:	£2000

## Club Notices

**EXPULSION**  
 Not now members of the following clubs. These should not be admitted as Union Associates.

Jamie King (526), North Heath Social Club, Kent.  
 S Hooper (A2244), Essington WMC, Wolverhampton.  
 A Mitchell (B1122), Essington WMC, Wolverhampton.  
 B Murphy (A2032), Essington WMC, Wolverhampton.  
 Janet Lashley, Hoo Village Institute, Kent.

**SUSPENSIONS EXPIRING ON DATES MENTIONED**

Eddie Honess, Epsom Common WMC, Surrey, (September 7, 2011)  
 Ms B Hayman (No 5027), Eltham Hill Club & Inst, South London (June 8, 2012)  
 H R Smith, Barry Dock Liberal Club (September 6, 2011)

Barry Douglas (D67) Russell Park Social Club, Bedford (June 2012)  
 David Rainey, Maltravers Social, West Sussex (November 3, 2011).

**CLUB APPLYING FOR MEMBERSHIP OF THE UNION**

North Enfield Cricket Club, Strayfield Road, Clay Hill, Enfield, Middlesex EN2 9JF. (North East Met. Branch).

**CLUBS CEASING MEMBERSHIP OF THE UNION**

**CLUBS CLOSED**  
 Smethwick Ex-Servicemen's Club. (West Midlands Branch).  
 Erith Trades Club. (Kent Branch).

**CLUBS WITHDRAWN**

North Ormesby Institute. (Cleveland Branch).  
 Penarth Ex-Servicemen's Club. (South Wales Branch).

**CLUB EXPELLED (Proprietary)**

Kingstanding RBL Warriors Club. (West Midlands Branch).

# CLASSIFIED ADVERTISING

on (0191) 265 0040

*Contact the Club Journal Advertising Manager*

Although the CIU has taken care to ensure that all advertisements are placed in good faith it accepts no liability for any advertisements in Club Journal.

## SPEEDCLEAN

THE ULTIMATE WAREWASHING RANGE




Heavy duty DISH & GLASSWASHING MACHINES offering unrivalled standards in speed, efficiency, reliability and durability.

FEATURES INCLUDE:

- built-in water softener
- 45 second wash cycle
- energy-saving insulated panels
- automatic detergent and rinse-aid dispensers

finance options to suit - full guarantee - nationwide service support

NELSON 0800 592 833

WWW.NELSONWASH.COM

## C&D Building Services

M: 07958 487114  
07803 923960

Extensions  
Alterations & Improvement  
Roofing  
Free Estimates

## Style Seating

Uk Manufactured Furniture




£40.79

- \* Fluted aluminium frame
- \* Moulded seat foam
- \* Light weight
- \* 10 different fabric choices
- \* 5 different frame colours
- \* No visible fixings
- \* FREE DELIVERY\*\*
- \* UK manufactured
- \* 5 year structural warranty
- \* Tested to BS EN 15373:2007 (test Level 3 - Severe Use)

Call for FREE 48 page brochure

tel: 01945 580099

View our vast range online [www.styleseating.co.uk](http://www.styleseating.co.uk)



# CLUB OUTINGS . . . CLUB OUTINGS

## BLACKPOOL & LANCASHIRE

**BLACKPOOL No. 1 WORKING MEN'S CLUB & INSTITUTE**  
9-17 Bloomfield Road, Blackpool  
FY1 6DH. Tel: (01253) 343 508  
*Extends a warm welcome to all CIU associates and bona-fide guests.*

★ **FREE ENTERTAINMENT** ★  
7 nights throughout the summer season (weekends winter).  
Change of artists nightly.  
Coach parties welcome.

**CONTACT THE SECRETARY IN WRITING**

**BLACKPOOL ROYAL BRITISH LEGION CLUB**  
33-38 King Street, Blackpool FY1 3EJ.  
Enjoy your visit with us at the club. Good all-round entertainment. Bookings for coach parties accepted. Room available for hire.

Sec: Mr K Teasdale or Treasurer Mrs R Thomas  
Club: (01253) 626 308; Office: (01253) 290 322  
[www.blackpoolrbl.co.uk](http://www.blackpoolrbl.co.uk)  
email: [blackpoolbritishlegion@gmail.com](mailto:blackpoolbritishlegion@gmail.com)

**BLOOMFIELD CLUB & INSTITUTE**  
128 Bloomfield Road, Blackpool, FY1 6JW.  
Bloomfield CIU welcome all Associate members and guests to enjoy top artistes in warm, friendly surroundings along with your favourite games – Bingo – Tote – Raffle seven nights a week. The club is on one level with disabled toilet facilities. Coach parties welcome. **Contact Secretary on (01253) 344 583. Fax: (01253) 349 402.**

Visiting Blackpool?  
Try **BRUN GROVE WMC**  
Brun Grove, Blackpool. Tel: (01253) 762 186  
No admission charge to concert room.  
No beer price increases for visitors.  
**BINGO – TOTE – RAFFLE**  
All associate members welcome.  
Parties welcome.

**BRUNSWICK WMC**  
BETHESDA ROAD, BLACKPOOL.  
Telephone: (01253) 624 208  
Coach parties welcome, also parking available. Entertainment 7 nights, comedians at weekends throughout the summer season. 2 large TV screens, cold food available. All branded doubles on offer. Smoking area at rear in beer garden. Wheelchair friendly. No beer increases for visitors. **Contact Billy Hill, Club Secretary.**

**KNOTT END WORKING MEN'S CLUB**  
Offers a great welcome to CIU members and parties.  
Why not try  
● a visit to the seaside ● a ferry ride to Fleetwood  
● a bowling green competition  
or just our good food and entertainment.  
SALISBURY AVENUE,  
KNOTT END-ON-SEA, LANCS.  
Office telephone (01253) 810362  
Tel: Secretary Mr R Cummins for dates and details (01253) 812 226

The famous **LAYTON INSTITUTE**  
Westcliffe Drive, Blackpool FY3 7HG.  
Entertainment every weekend.  
Summer show Tues-Sat, August 19-October 25.  
Parties welcome. Ring in advance.  
Bowling green for hire Saturdays.  
**Contact Secretary on (01253) 391 774 / 393 801**  
website: [www.layton-institute.co.uk/](http://www.layton-institute.co.uk/)

**ROSEGROVE UNITY Working Men's Club**  
Holme Lodge, Rossendale Road, Burnley, Lancs, BB11 5DL.  
Sited 2 minutes from Junction 9 on M65.  
Large car parking space available.  
Entertainment Friday, Saturday and Sunday.  
Bookings must give 14 days' notice.  
**Contact Secretary on (01282) 453 203 or e-mail [info@rosegroveunity.co.uk](mailto:info@rosegroveunity.co.uk)**

## BRIGHTON & SUSSEX

**BRIGHTON TRADES LABOUR CLUB**  
Lewes Road and Elm Grove  
[www.btlc.ciu.org.uk](http://www.btlc.ciu.org.uk)  
Live entertainment Saturday evenings.  
Brighton Races, city and beach nearby.  
Main bus route right outside the door.  
Coaches welcome (please call first).  
Tel/fax: Secretary (01273) 601 101  
Email: [admin@btlc.ciu.org.uk](mailto:admin@btlc.ciu.org.uk)

**Eastbourne & District Trade Union Club & Institute Ltd.**  
Clapham House, 48 Seaside, Eastbourne,  
East Sussex BN22 7QL.  
A warm welcome is guaranteed to all CIU associates and guests. A good selection of reasonably priced beers and spirits available. Temporary membership can be arranged at the door for all holiday makers. Large groups or coach parties are welcome with prior arrangements. Situated 5 minutes walk from the beach.  
**Please contact secretary on (01323) 727703.**

**EASTBOURNE WORKING MEN'S CLUB**  
102/104 Firle Road, Eastbourne BN22 8ET.  
Tel: (01323) 723322  
Email: [eastbournemc@googlegmail.com](mailto:eastbournemc@googlegmail.com)  
Visit the one and only workers' club in our lovely South Coast town. We have live music, raffles, bingo, darts, snooker and pool. See our Facebook page for coming events. A warm welcome to CIU members all year round.

**LANCING & SOMPTING RBL CLUB**  
6 Colver Road, Lancing, West Sussex  
BN15 9AX. Tel: (01903) 764 815  
A warm welcome awaits all visitors. Facilities include Snooker, Pool, Darts, Crib and Sky TV. Catering for private parties can be arranged (14 days' notice please). Live entertainment every Saturday. Coach parties welcome for prior notice please contact the Secretary. Tel: Lancing & Dist. (01903) 753 127.

**LITTLEHAMPTON TRADES & LABOUR CLUB**  
Wick Street, Wick, Littlehampton  
BN17 7JH. Telephone (01903) 714 054  
A warm welcome awaits all visitors. Facilities include darts, crib and Sky TV. Catering for private parties can be arranged (14 days' notice please). Live entertainment every Saturday. Coach parties welcome with prior notice, please contact the Secretary.

**SEAFORD RBL CLUB**  
Claremont Road, Seaford, East Sussex BN25 2BQ.  
Sited on A259, a warm friendly welcome awaits in this family-oriented club. Entertainment, darts, bingo, snooker and pool. Home-cooked food Wednesdays to Sundays. Phone for times.  
Temporary memberships available. Coach parties welcome. Please give 14 days' notice  
Telephone: (01323) 890 154

## ESSEX & EAST ANGLIA

**COMRADES SPORTS & SOCIAL CLUB, CLACTON**  
A warm welcome awaits at both our premises. 205 Old Road, a short walk from seafront, has live entertainment Saturday evenings, disco Sunday afternoons, back garden and car park. 9 Colne Road is one minute from sea front. Live entertainment Tuesday, Thursday, Saturday afternoons and Saturday evenings. Pool, darts, raffles and bingo at both. **Coach parties welcome by ringing the Secretary in advance on (01255) 423314.**

**HUNSTANTON (NORFOLK) UNITED SERVICES SOCIAL CLUB**  
A warm welcome to all visitors. Large enclosed garden and car park with sea views. Three snooker tables, also pool table and darts. Bingo Mondays and Thursdays and one game Saturday evening. Live weekend entertainment. Catering arranged on request. Disabled friendly. Close to Sandringham Royal Estate, Coaches welcome midweek.  
**Contact Club Steward on 01485 533360.**

**Naval & Military Club (Southend-on-Sea)**  
20 Royal Terrace, Southend SS1 1DU.  
Tel: 01702 347169

A warm and friendly welcome awaits you. Large rear garden and roof terrace with fantastic views overlooking the seafront and estuary. Live entertainment Saturday nights and Wednesday afternoons. Hot and Cold Food available every day of the week. Local Real Ale Club of the Year. Coach parties welcome but must contact the Manager, Mr John Murray prior to the visit.

**WALTON-ON-NAZE RBL CLUB**  
Vicarage Lane (off High Street). 01255 674 153  
Visiting the seaside? A warm welcome and friendly atmosphere – two minutes from beach front.  
Live entertainment at weekends – sing-a-long Thursday afternoons – large screen TVs – pool – darts. Good range of drinks and bar snacks available. New membership available – CIU and RBL affiliated.  
**Coach parties welcome! Contact Secretary**

## HAMPSHIRE & ISLE OF WIGHT

**LINDFORD & DISTRICT WORKING MEN'S CLUB**  
Liphook Road, Lindford, Bordon, Hampshire  
GU35 0PN. Telephone: (01420) 472 228  
A warm welcome is extended to all Associate Members. Only stipulation is children under five years old must leave the club by 9pm. Just off the A325 road between Farnham and Petersfield. So why not call in on your way to and from the south coast. **Please give the Secretary 14 days' notice of party visits.**

**NEWPORT (I.W.) SOCIAL CLUB**  
13-14 Lower St James Street, Newport,  
Isle of Wight PO30 5HB. Tel: (01983) 527 291  
Sited in the centre of town, with a warm friendly atmosphere where you can bring family and friends. Open all day, function room, snooker room, darts, pool and jukebox. Kitchen now open 7 days a week for hot and cold food. Coach parties always welcome by prior arrangement.

**ROYAL BRITISH LEGION SOCIAL CLUB (COWES) LTD.**  
85 High Street, Cowes, Isle of Wight PO31 7AJ.  
A warm and friendly welcome is extended to all visitors. Situated on the sea front with panoramic sea views from the stage dining area, the club has one of the best views in the country. Ideal for parties and outings. Freshly prepared meals available 7 days a week.  
Disabled facilities. Coach parties very welcome, please notify Secretary or bar manager in advance. Entertainment Friday and Saturday evenings.  
Tel: (01983) 292921 email: [rblcowes@onwight.net](mailto:rblcowes@onwight.net)

## HEREFORD & WORCESTERSHIRE

**HEREFORD WELSH SOCIAL CLUB**  
1 Hinton Road, Hereford, HR2 6BL.  
Tel: (01432) 269038/285974.

Email:  
[herefordwelshclub@hotmail.co.uk](mailto:herefordwelshclub@hotmail.co.uk)  
A friendly welcome is extended to all Associate Members. Live Entertainment every Saturday evening.  
Hot and cold food available. Coaches welcome (please contact Secretary prior to your visit).

Please visit our website:  
[www.herefordwelshsocialclub.co.uk](http://www.herefordwelshsocialclub.co.uk)  
"Hereford's most popular social club"

**(HEREFORD) RICHMOND PLACE CLUB**  
69/71 EDGAR STREET, HEREFORD HR4 9JP  
A warm and friendly welcome to all associates, whether you are visiting for the races, football or just passing through. Live entertainment every Saturday. Sunday-Country & Western/Swing and Jive. Restaurant with hot and cold food available/Sunday lunches (Book in advance) Disabled facilities. Coach parties very welcome.  
**Contact Secretary, Les Walker on (01432) 356 529.**

Let people know about your club by taking out an advertisement in our Club Outings guide for as little as £20 a month.

Thousands of club members take part in organised social trips or travel to sports events outside their own area. If you are close to a football ground or a racecourse, or in a convenient place to make a refreshment stop – let them know.

Ring Chris Brewis on (0191) 265 0040 or email [cj@powdene.com](mailto:cj@powdene.com)

## KENT

**BEXLEYHEATH WMC**  
Royal Oak Road, Bexleyheath, DA6 7HG  
Telephone (0208) 303 2163  
Friendly atmosphere, comfortable surroundings and an excellent range of beers to quench your thirst. Everything you require on your visit to Bluewater and Lakeside shopping centres. Refreshments available. (Please give advance notice).

**SOUTHBOROUGH MEN'S CLUB**  
Forge Road, Southborough,  
Tunbridge Wells TN4 0EX.  
Tel: (01892) 529 304; Office: (01892) 523 832  
A warm and friendly welcome is extended to all Associate members and guests. Ideal for parties and outings from the coast, we have frequent live entertainment on Saturdays, bingo on Wednesdays and Sundays. Sky TV, snooker and pool. Club open all day Friday, Saturday and Sunday. Coach parties and catering by arrangement.

**SUNDRIDGE PARK WMC**  
134 BURNT ASH LANE, BROMLEY.  
Tel: (020) 8464 3638 (Office); (020) 8460 6348 (Club)  
Located close to A21 and A20. A warm welcome is extended to all visitors. Two bars serving a wide range of drinks. TV in bar and the lounge. Purpose-built snooker room with four tables. Live entertainment Saturday and Sunday evenings. Coach parties by prior arrangement with the office.

**WAINSCOTT INSTITUTE (WMC)**  
4 Wainscott Road, Wainscott, Rochester,  
Kent ME2 4LB. Tel: (01634) 717 464  
A warm welcome is extended to all CIU associates. Live music & bingo on a Saturday night. A range of facilities including snooker, pool & darts. We welcome coach parties by prior arrangement with the steward. Buffet refreshments can be arranged. We are close to all the motorways via the Medway towns. CHILDREN ARE WELCOME.

## LEEDS & WEST YORKSHIRE

Visiting Blackpool or Yorkshire Coast?  
Haydock Park or York Races?

Then call at:  
**ELLAND WORKING MEN'S CLUB**  
Roseberry Street, Elland, West Yorkshire.  
For your breakfast on the outward journey. And for an evening's splendid entertainment on your way home. We are only 2 miles from Junction 24, M62 on the A629. A warm welcome extended to all Associate Members. Live entertainment on Saturday and Sunday evenings. Dancing on Thursdays to our resident organist. Fully modernised Concert Room and Lounge. Excellent Games Room. Floodlit Bowling Green. Large Car Park.  
**Coach Parties welcome – please let us have 14 days' notice in writing to the Secretary Steve Graydon. Tel: Club (01422) 373 023. [www.ellandwmc.web.com](http://www.ellandwmc.web.com)**  
Telephone pre-bookings to be confirmed in writing to the Secretary.



**SWARCLIFFE WORKING MEN'S CLUB**  
**Swarcliffe Avenue, Leeds LS14 5DE**

A warm and friendly welcome always assured in the comfortable surroundings of our recently refurbished club. Live entertainment every Friday, Saturday and Sunday evening. Relax in the quiet of the lounge or try a game of snooker on one of our three superb tables. Big screen Sky Sports TV.

**Planning a day at the races?  
York, Wetherby, Ripon.**

We are 2 minutes from the A64 and 5 minutes from the M1. Breakfast and evening meals for large parties available by appointment.

**Contact: Glen Doyle (Secretary)**  
**0113 2959100**

**BELLE ISLE WMC****Belle Isle Road, Leeds LS10 3PE.**

Warm and friendly club with large car park, good value beer and large concert room. Live bands Friday, Saturday and Sunday. Coaches welcome.

**Contact Secretary on (0113) 2718 768.**

**LEICESTER &  
EAST MIDLANDS****NEW PARK SOCIAL CLUB &  
INSTITUTE LIMITED****Battersbee Road, Leicester LE3 9LD**

All coach parties welcome, with 14 days' notice to the secretary. Fully air conditioned large concert room. Hot and Cold Food available. Sky TV shown on big screen in the games room. Children allowed Friday and Saturday nights. If you have any questions please contact the secretary on Telephone (0116) 2333 305 or Fax (0116) 2333 303.

**NOTTINGHAM  
ODDFELLOWS CLUB****89 HUMBERSTONE GATE, LEICESTER.****TELEPHONE: (0116) 262 0181****262 5404 (EVENINGS) – CIU AFFILIATED**

- ★ City Centre Club
- ★ Coach park right outside premises
- ★ 2 minutes from centre of Leicester

*Coach parties and parties always welcome.*

Food supplied hot or cold – 7 days' notice or please phone prior to visit. Children welcome. Dances Monday, Tuesday and Friday. Entertainment available.

**Phone or write to Secretary Eric Johnson**

**SAFFRON LANE ESTATE WMC**  
**429 SAFFRON LANE, LEICESTER, LE2 6UF**

Welcomes all CIU members to our friendly club here in Leicester. Only 5 minutes from the M1 junction 21 and close to the racecourse and the football, rugby and cricket stadiums.

Clean, comfortable and fully air-conditioned. Please visit our website where you will find details of all our facilities and activities.  
**www.saffronlanewmc.co.uk**

**SKEGNESS EX-SERVICE CLUB**  
**2 Grand Parade, Skegness, PE25 2UN.****Telephone: 01754 762113**

Located on the seafront near the clocktower, 2-3 mins from town centre. Lounge bar, pool/children's room, 1st floor patio area. Reasonably priced beers/lagers and house doubles. Selection of chilled baps.

Live entertainment every Saturday (Sundays main season). Open 11.30-6.00 and 7-11.30 most days. Pre-booked coaches welcome – come to a completely refurbished 21st century club.

**SKEGNESS WMC****Briar Way, Skegness, Lincolnshire PE 25 3NR**  
**Telephone: (01754) 762 598**

A warm and friendly welcome is extended to all CIU associate members visiting the area. We are centrally located in the town 5 minutes from the bus and railway stations (opposite the market). We offer facilities including a concert room, games room and a special families room. Our resident organist will entertain you in the lounge. After the Spring Bank Holiday we will also have various visiting artistes. Coach parties are welcome by appointment.

**LONDON****BECKENHAM SOCIAL CLUB****89-91 Churchfields Road, Beckenham BR3 4QQ.**

A warm welcome is guaranteed at our recently refurbished club. Beers and spirits from Heineken, Coors and Shepherd Neame. Live sport on flat screen TVs.

Free live entertainment Saturday and Sunday nights. 20 mins Central London, close to Crystal Palace FC and athletics track. Coach parties welcome with prior notice. **Contact the Secretary on (020) 8650 1463.**

**DONE OUR BIT  
EX-SERVICEMEN'S CLUB****128A MAYGROVE ROAD, LONDON NW6.****Office: (020) 7624 3701; Club: (020) 7624 3603**

Coach Parties welcome by appointment with the Secretary. Entertainment Friday, Saturday and Sunday. Food by arrangement. 15 minutes from Wembley Stadium. 10 minutes from West End.

**No children under 16 on Saturday.**

**THE HAMMERSMITH CLUB****Rutland Grove, London W6 9DH**

10 mins' walk from Fulham FC and less than 25 mins by local transport to Chelsea and QPR. A warm and friendly welcome to away fans looking for good hospitality and a relaxing drink.

Also 20 mins to Westfield, Europe's largest shopping centre and 30 mins to West End theatres.

**Contact us on (020) 8748 5760 or visit  
www.hammersmithclub.co.uk**

**HARROW ROYAL BRITISH LEGION****Northolt Road, South Harrow HA2 0DW.**

Extends a warm welcome to all Associate members and guests. Situated 10 minutes from the A40 and 20 minutes from Wembley Stadium. We have live bands every Saturday and Sunday night. Catering on request. Coach parties welcome with prior notification to Kath or Roy Roberts. **Telephone: (020) 8422 1222.**

**HAYES WMC****Pump Lane, Hayes, Middlesex UB3 3NB.****Telephone: (020) 8573 1721****e-mail: bobdaybell@aol.com**

Why not visit the flagship of clubs in the South? Ascot, Kempton Park & Sandown racecourses all nearby. Live bands every Friday and Saturday night. Late night cabaret last Saturday of every month, at least 3 acts, charge for entry, late bar. Catering available weekends, orders taken in advance to your requirements.

Visit our website:

**www.hayesworkingmensclub.com** for our full entertainment programme. Coaches welcome by prior arrangement with the secretary.

**ISLEWORTH CLUB****Goodenough House, 109 St John's Road, Isleworth, Middlesex TW7 6PN. Telephone: (020) 8560 2569**

We are good enough – are you?

5 minutes from Twickenham Rugby and only 15 minutes from Kempton and Sandown. Call in on your way and give us a try. **Pick your winners** from our varied selection of popular beers which are available in either our large Concert Room or Lounge. Close to the M4 and M3. Please give prior notice for parties. Coach parties are welcome.

**Wealdstone Social Club****Railway Approach, Harrow, HA3 5BX.****Tel: (020) 8427 3334****email: secretarywsc@btconnect.com**

For 15 min connection to **WEMBLEY STADIUM.**

Coach parties welcome. Free parking all day.

Please arrange with Secretary for bookings.

Function Hall available for private parties.

**Friendly staff – great beer – good company**

**NORTHAMPTONSHIRE  
& CAMBRIDGESHIRE****St James Working Mens Club**  
**Weedon Road, St James, Northampton.**

A warm welcome awaits all club members.

Lounge, Games Room and large Concert Room.

Parties welcome, catering if required by prior arrangement. 5 minutes M1, Junction 15A.

**Please contact Secretary Mrs P. Webster.**

**Tel: (01604) 456 602 www.stjameswmc.co.uk**

**SHEFFIELD &  
SOUTH YORKSHIRE****ARMTHORPE CORONATION CLUB****Tranmoor Lane, Armthorpe,****Doncaster DN3 3BS.**

Handy for racecourse and Doncaster Rovers. Close to M18. Big screen TV, entertainment every weekend.

**Ring Club Secretary Alan Jones  
on (01302) 831 393**

**ARUNDEL EX-SERVICEMEN'S CLUB****CITY ROAD, SHEFFIELD**

*A friendly Club close to Town Centre*

Facilities include a 500 seat Concert Room, two other lounges and a Games Room. Great Cabaret every night except Tuesday and Wednesday. Coach parties please contact Mr B. Simmonite.

Children allowed up to 10 years.

Catering for Buffet if required.

**Telephone: (0114) 239 7151**

**CARCROFT VILLAGE WMC****Chestnut Avenue Carcroft, Doncaster DN6 8AG**

Extends a warm welcome to all CIU affiliated members. Coach Parties welcomed by prior arrangement. 1 mile from A1 and close to M1, M18 and M62.

Top class entertainment every weekend. Handy for Doncaster Races and trips returning from North or South coastal routes. Big Screen Sky TV and premier football. **All enquiries to John Oldroyd, Secretary on (01302) 725 497.**

**www.carcroftvillagewmc.org.uk**

**HAWTHORN RECREATIONAL  
& SOCIAL CLUB****Goodison Boulevard, Cantley,  
Doncaster. Tel: (01302) 536 565**

Easily accessible for the Racecourse.  
Big screen Sky TV.  
Artistes on Saturdays.

**INTAKE SOCIAL CLUB****Craithie Road, Doncaster DN2 5EG.**

We are the closest club (5 minutes' walk) to Doncaster Racecourse. (See Page 19 for offers). Bar snacks available. Tremendous value-for-money bar prices.

**Contact Secretary Tom Forester  
in advance on: (01302) 320 036**

**SKELLOW GRANGE WMC****Skellow Road, Skellow, Doncaster DN6 8JL.****Tel: (01302) 722 567 www.skellowgrange.com****(Secretary: N. Harris)**

It's 1/2 mile from A1M motorway links gaining access from M62, M18, M1. Completely renovated club, top class entertainment at weekends and top class money tombola through the week. Bus parties welcome, ample parking space. Handy for Doncaster Races or call back from the coast.

**– All associates of CIU and guests welcome –**

**THE WESTMINSTER RECREATIONAL CLUB**  
**Westminster Crescent, Intake,  
Doncaster DN2 6HU**

Situated just off Leger Way (approximately 1/2 mile from main Race Stands).

Coach parties welcome. Large car parking area. Artistes Friday/Saturday night.

**Telephone (01302) 812 103/4**

**SURREY****CHERTSEY SOCIAL CLUB****Pycroft Road, Chertsey. 5 minutes M25 J11.**

Country Club 1st Monday monthly; Line Dancing Wednesday; Bingo Thursday, Saturday and (fun) Tuesday afternoons. Live music Saturday; some Fridays. Thorpe Park 5 minutes; handy for Epsom, Ascot, Sandown, Kempton Park, Windsor Castle/racecourse and Chessington. Coaches and buffet/hot snacks by prior arrangement.

**Tel: (01932) 563 265.**

**EGHAM UNITED SERVICES CLUB****111 Spring Rise, Egham, Surrey TW20 9PE.**

*"North Surrey CAMRA Club of the Year 2008 & 2009"*

*"Finalist for CAMRA Club of the Year 2009"*

Located 5 minutes from J13 M25, handy for Windsor Castle and races, Kempton, Ascot, Epsom and Sandown. 5 mins from Egham Station on the Waterloo to Reading line. Three real ale and cider festivals a year.

**www.eusc.co.uk**  
**Tel: (01784) 435120 or 07738 714572**

(Real Ale Festivals and Party Bars also arranged)

**DAY OUT RACING  
ESHER W.M.C.****142 Esher High Street, Esher, Surrey.****Telephone: (01372) 467 758**

Sandown Race Course within walking distance.

Kempton Park and Epsom also nearby.

A warm welcome is extended to all associate members.

**WALTON COMRADES CLUB****7 Franklyn Road, Walton-on-Thames, Surrey.**

A warm welcome is extended to all affiliated members.

Near to Hampton Court Palace, Kempton, Sandown and Epsom Racecourses. Within easy reach of Thorpe Park, Windsor Castle and Chessington World of Adventure. Easy access M25. Live music Saturdays.

We are open all day every day.

**Coach parties welcome. Apply to Club (01932) 226 052.**

**WALTON WORKING MEN'S CLUB****21A CHURCH STREET, WALTON-ON-THAMES,  
SURREY KT12 2QP.**

Extends a warm welcome to Associate Members.

Near M25/M3, Sandown and Kempton Racecourses,

Hampton Court, Wentworth, Twickenham Rugby and

Thorpe Park. Ideal fishing – River Thames. Dancing

to live music Saturdays/Sundays. Coaches. In writing

to the Secretary.

**Telephone: (01932) 220 361.**

**THAMES VALLEY****Banbury Trades & Labour Club****32 West Bar Street, Banbury,****Oxon OX16 9RR. Tel: (01295) 215 7119 (H);****(01295) 254 168 (Club).**

A warm welcome is extended to all Associates.

Coach parties welcome with 14 days prior notice

to Secretary. Live entertainment on Saturday

night. Food available. Please contact Secretary

with your booking.

**PANGBOURNE WORKING MEN'S CLUB****Whitchurch Road, Pangbourne, Reading,****Berks, RG8 7BS.**

Pangbourne WMC is a family-oriented club in a picturesque Berkshire village, 200 yards from the River Thames. We offer Saturday night entertainment, quiz and crib nights, darts, snooker, pool, and a hall with a dance floor and separate bar. Bar food available by prior arrangement. Ample car parking. Coach parties welcome by appointment.

**Telephone: (0118) 984 2885**

**Although the CIU has  
taken care to ensure  
that all advertisements  
are placed in good faith  
it accepts no liability  
for any advertisements  
in Club Journal.**

**To advertise ring Chris  
Brewis on (0191) 265  
0040.**



## WALES

### BETTWS SOCIAL CLUB

Lambourne Way, Bettws, Newport, Gwent.  
A warm friendly welcome assured to all CIU affiliated members and guests.  
Less than 10 minutes from junction 26 of the M4. Coach parties welcome by prior appointment. Live entertainment every Saturday evening. Catering can be provided by arrangement. **Tel: (01633) 858 780.**

### CARDIFF WEST END SOCIAL CLUB

COWBRIDGE ROAD WEST, ELY, CARDIFF CF5 5BY.  
A very friendly welcome to CIU Associates and their families from CARDIFF'S PREMIER SOCIAL CLUB.  
10 minutes from M4.  
15 minutes to city centre.  
Millennium Stadium,  
Cardiff International Arena, St. David's Hall/Centre, Cardiff Bay.  
Live entertainment every Saturday Night with Bingo/Raffle/Tote/Disco  
FULL SKY SPORTS/RACING UK  
Hot and cold food available.  
COACH PARTIES MOST WELCOME.  
**Telephone: (029) 20594004**

### LLANHARRY WMC & INSTITUTION LTD.

Elm Road, Llanharry, Pontyclun, Mid-Glamorgan CF72 9HR.  
Extends a warm welcome to all CIU associate members and guests. Coach parties welcome by arrangement. Entertainment every Saturday. Restaurant facilities available. 10 minutes from junction 34 M4 motorway.  
**Telephone (01443) 222 217**  
**Fax/Telephone (01443) 224 322**

### ROGERSTONE AND BASSALEG SOCIAL CLUB

1 Tregwilym Road, Rogerstone, Newport NP10 9DW.  
A warm friendly welcome assured to all CIU affiliates and guests, less than 10 minutes from junction 27 of the M4. Coach parties welcome by prior appointment, live entertainment every Saturday evening.  
**Telephone: (01633) 893 508.**

## WARWICKSHIRE & COVENTRY

### BEDWORTH

EX-SERVICEMEN'S SOCIAL CLUB & INSTITUTE  
Rye Piece, Bedworth, Nr. Nuneaton, Warwickshire. **Tel: (024) 7631 3236**  
Extends a warm welcome to all associates. Restaurant facilities Monday to Saturday - Bar snacks also available. 6 minutes from junction 3 of M6. Approx. 5 miles to Coventry City. Saturday/Sunday night entertainment, live music, bingo, bar and lounge. Contact Secretary for bookings.

### HEN LANE SOCIAL CLUB

Beacon Road, Holbrooks, Coventry CV6 4DS.  
5 minutes from M6 Junction 3, 10 minutes' walk from Ricoh Arena, minibus from club on match days. Excellent function room and facilities. Hot and cold snacks available at all times. Prior notice required for coach parties and catering (menu sent on request).  
Please contact the Secretary.  
**Tel: (024) 7672 4830; Office: (024) 7672 4832.**

### WILLENHALL SOCIAL CLUB

ROBIN HOOD ROAD, COVENTRY CV3 3BB. **Secretary: (024) 7630 1222 or 7630 3278.**  
Welcome to all Associate Members. Entertainment every Saturday and Sunday night in concert room (seats 600). Bar, games room and luxury lounge facilities. Large car park. Hot and cold snacks available. 10 minutes from City Centre. No Children Allowed.  
**Coach parties apply to Secretary.**

### UNICORN SOCIAL CLUB

Holbrook Lane, Coventry CV6 4DE. (5 mins from M6 J3). Just 15 minutes' walk from the Ricoh Arena, home of Coventry City Football Club. Excellent function room and facilities including games room and bar with large screen satellite TV. Modern air-conditioned facility with live music every Saturday evening and hot and cold food available. Prior notice required for coach parties, including official supporters' clubs.  
Please contact the Secretary at:  
**unicornc Coventry@yahoo.com**  
or by telephone on (024)76 684741

## WEST COUNTRY

### The Cabbage Patch Club LAWRENCE WESTON SOCIAL CLUB

Lawrence Weston Road, Bristol BS11 0ST.  
Extends a warm West Country welcome to those travelling to holiday destinations. 3 mins from Junction 18 M5. 10 minutes M4. Coach parties by arrangement.  
**Ring (0117) 982 9148**

### POOLE LABOUR CLUB

22 Wimborne Road, Poole, Dorset  
**Tel: 01202 674 059 / 686 256**  
Offers the 3 S's to all affiliated members, Sea, Sand and Speedway!  
Centre of Poole, 20 minutes from Bournemouth, 2 minutes from Poole Stadium for Speedway and Greyhound Racing. Good beer, warm welcome, open all day. Entertainment on Saturday nights, Tuesday Tea Dances. Darts, Skittles, Snooker, Pool and Dominoes games can be arranged. Certain restrictions apply to children. Contact Secretary for details.

### WESTON-SUPER-MARE WMC

Orchard Street, Weston-super-Mare.  
**Telephone: 01934 418 202**  
A warm welcome is extended to Associates and their families in Weston's premier club. Situated in the town centre and close to the sea front.  
Live entertainment every Saturday and Sunday. Bingo (Friday Saturday and Sunday). Buffets arranged.  
Large downstairs concert room seating 250. Coach parties welcome including a Saturday.  
Please contact the Secretary giving prior notice of visit. Open all day.

### WEYMOUTH WMC

MITCHELL STREET, WEYMOUTH, (Harbour End Of Town)  
Less than 5 minutes from the beach!  
We welcome all CIU affiliated members. Music Friday & Saturday evenings, with Bingo fliers on these nights. Plus the usual club activities. Restaurant now open.  
**Tel: (01305) 786 392 or (01305) 787254**  
**www.weymouthworkies.co.uk**

### WIDCOMBE SOCIAL CLUB

Widcombe Hill, Bath BA2 6AA. **Tel: (01225) 425076**  
**www.widcombesocialclub.co.uk**  
Large friendly club, 5 mins walk from city centre. Darts, skittles, snooker, dance floor, lakeside terrace, entertainment. Food including our famous Sunday roasts. Associates warmly welcome. Child friendly. Coaches by appointment. Catering available. Easy access from M4.  
After a day at Bath Races or a fabulous shopping trip, come and relax at Bath's hidden gem.

Passing through the Cotswolds? Then why not visit

### WOTTON HALL CLUB LTD.

138 BARNWOOD ROAD, GLOUCESTER  
- We welcome all Associate Members -  
Bar, Lounge, Ballroom and Games Room.  
Dancing every Saturday. Restaurant facilities and basket meals available. 14 days' notice required.  
**Telephone: Secretary (01452) 610 025**  
9.00 am-1.00 pm Monday-Friday

## WEST MIDLANDS & BIRMINGHAM

### ALVECHURCH SPORTS & SOCIAL CLUB

The Square, Alvechurch, Near Birmingham B48 7LD.  
A friendly welcome to all Associate Members. Weekend entertainment and comfortable surroundings, also food available. Close to M42 and M5 in a picturesque part of the countryside.  
Contact: A. Morrison, Secretary on (0121) 445 2121. Large parties please notify 14 days in advance.

### REMEMBRANCE CLUB LTD.

10 CHESTER ROAD, CASTLE BROMWICH, BIRMINGHAM B36 9DD  
Extends a warm welcome to all Associate Members. Live entertainment every Saturday and Sunday evening. Line Dancing Mondays. Ballroom Dancing Tuesdays. Large comfortable lounge. Games Room. Sky TV. Ample parking. Close to M6/M42 (nr. Spaghetti Junction). Coaches by arrangement. Contact the Secretary. (0121) 747 5256 / 747 2943

### YARDLEY WOOD SOCIAL CLUB

118 School Road, Yardley Wood, Birmingham B14 4JR.  
Club Tel: (0121) 474 2026 Sec: (0121) 474 3725  
Visit our brand new website:  
**http://www.yardleywoodsocialclub.com/**  
Two large TV screens, 6 snooker tables, bingo and weekly entertainment, bowling green. Function rooms available for hire and catering. Large car park at rear of the club. Associate members welcome.

## YORKS (N & E) & NORTH EAST

### BEECHWOOD, EASTERSIDE & DISTRICT SOCIAL CLUB

Broadwell Road, Easterside, Middlesbrough TS4 3PP.  
(Opposite The James Cook University Hospital)  
Live music every night with bingo, totes and raffles. Large bar with 4 snooker and 2 pool tables, 2 dart boards and all Sky sports channels. Two smoking areas with heated Beach Huts. Coach parties welcome with prior notice to The Secretary.  
**Tel: (01642) 318789. Check the website it's all on there, www.beadsclub.co.uk**

### BLAKELAW & DISTRICT SOCIAL CLUB

6 Cragston Way, Newcastle NE5 3SW.  
Friendly club on northern edge of Newcastle. Handy for A1, Racecourse and St James' Park. Coach parties welcome. Food can also be arranged.  
Contact Secretary Alan Campbell on 07986706354 or **blakelawsc@googlemail.com**

### CENTRAL WMC

7 Beaumont Street, Darlington  
**Tel: (01325) 464054**  
Situating near town centre, five minutes from A1(M). Associate members and coach parties are welcome as are football and racing followers. Please give prior notice.  
Live entertainment and catering by private arrangement. Room available for birthdays, engagement parties, wakes and weddings.

### CITY OF YORK TRAMWAYS EMPLOYEES' CLUB AND INSTITUTE

1 Mill Street (off Piccadilly), York YO1 1PY.  
**Telephone: (01904) 623 953**  
5 minutes from Marks & Spencer  
Entertainment and dancing every night except on Wed and Thurs. Prize games. Concert room (seating 275), Games Room, Bar and TV Lounge. Visiting Associates are welcome. Parties by arrangement.  
**Telephone: (01904) 623 953.**

### King Street Social Club

Phoenix House, 27 King Street, North Shields NE30 1BZ.  
**Telephone: (0191) 2900473.**  
Situating on the main road from North Shields to the coast. Main bingo sessions are Tuesday and Friday evenings and Sunday morning.  
Top class live entertainment every weekend supported by resident band "Soul Machine".  
Coach parties welcome with prior notification to the Secretary David Farrell. **Telephone (0191) 2900474.**

### Middlesbrough RAOB Club (The Buffs)

51 Wilton Street, Southfield Road, Town Centre A19-A66 2 minutes. Redcar races, 10 minutes. Middlesbrough FC 5 minutes. Games Room, TV Lounge and Lounge. Live entertainment Saturday and Sunday. Disco's Wednesday and Friday. 50/50 Dancing Tuesday and Thursday. A warm welcome to all affiliated members including coach parties with prior notice to the Secretary. **Telephone: (01642) 860 511.**

### NEW YORK CLUB & INSTITUTE LIMITED

22-26 Blossom Street, York YO24 1AJ.  
**Tel: (01904) 612 244 newyorkclub@btconnect.com**  
Secretary: Frank A. Healy BA HND CMD  
300 yards from station on way to racecourse. Warm and friendly welcome to all Associate Members and guests. A great place to call into before or after your visit to York. Beer garden and 42" screen with Sky TV. Parties and buffet-style catering by prior arrangement.

### NORTH BIDDICK SOCIAL CLUB

BONEMILL LANE, FATFIELD, WASHINGTON NE38 8AN.  
Excellent riverside location. Five minutes from A1(M) with excellent car/coach parking facilities. Games room with 2 snooker tables and 2 pool tables. Restaurant facilities and buffets catered for. Why not call on your way to see football games or cricket games in the area? Coaches welcome by prior arrangement with Secretary Michael Normile on (0191) 416 0148.  
Why not visit our website at **www.northbiddickclub.co.uk**

### OSBORNE WMC

Osborne Road, Chester-le-Street, County Durham DH3 3DS.  
200 yards from the station and short walk to the Riverside Cricket Ground. Evening car and coach parking facilities. Live entertainment every Saturday night. A great place to call in after your day at the races. Bingo Mondays and Fridays.  
Just give us a ring on (0191) 388 8679.

### RELTON TERRACE WMC

1 Red Rose Terrace, Chester-le-Street DH3 3LN.  
Five minutes' walk to Durham County Cricket ground and riverside park. Eight miles from both Sunderland AFC and Newcastle United. Away fans welcome.  
Contact club on (0191) 388 3477 for more information.

### ST CLEMENTS WMC

Count de Burgh Terrace, South Bank, York YO23 1HH.  
Small friendly club. Five minutes from York Racecourse. Artists every Saturday night. Regular and guest real ales. Coach parties and catering by arrangement.  
**Telephone: (01904) 629973**

### SPITTAL RESIDENTS ASSOCIATION

Jubilee Centre, Highcliffe, Spittal, Berwick-upon-Tweed TD15 2JL.  
A warm welcome to all. Five minutes from the A1, 30 minutes from Kelso Races, cabaret every Saturday evening. A spectacular evening once every month. Bingo Friday, Sunday and Monday nights. Coach parties welcome.  
Ring Treasurer Carol Lynn in advance on (01289) 305 597.

**More than 100 CIU Clubs inform members of their existence through our Club Outings Guide for as little as £20 per month. Join them in the next issue by contacting Chris Brewis on (0191) 265 0040.**





CIU SALT BURN CENTRE

# 2011 PRICES AND THEMED BREAKS

To book please ring 01287 622 008

### MARCH-DECEMBER

Non-member B&B = £36; Non-member half board = £42; Club member half board = £32; Convalescent stay = £29

Club parties over 15 people: £25 per person with one room free.

Club parties over 35 people: £25 per person with two rooms free.

### RACING BREAKS

Monday 22nd-Wednesday 24th August, (Sedgefield and Catterick) £160.

Thursday 25th-Saturday 27th August, (Thirsk and Redcar). £160.

Three and six-day racing breaks available. Price for both August racing breaks £300.

### HALLOWE'EN

October 29th-November 1st - £110.

### TURKEY AND TINSEL

Monday 28th November-Friday 2nd December. £155.

Friday 9th December-Tuesday 13th December. £155.

New Year Party £155.

All prices include VAT

# BOOK EARLY FOR HALLOWE'EN!

WE'VE already asked you to book early for Christmas - well it makes even more sense to book early for Hallowe'en as 15 places had already been booked up by early June.

The price of £110 per person for the three-night stay includes a buffet every night. Our Hallowe'en weekend starts on October 29 and continues through until Tuesday, November 1. There will be live entertainment on Saturday and Sunday nights then a fancy dress Hallowe'en party on the Monday evening.

As well as Hallowe'en Saltburn has special breaks organised for Christmas

## SALT BURN HOUSE Valda Edmunds

and New Year as well as our popular racing breaks, which combine a three-night stay with trips to two local race meetings. The first racing break took place from Monday, June 13 to Wednesday, June 15 and included trips to Thirsk and Ripon.

Raymond Young of Bridlington British Legion Club was the winner of our Punters competition and he is pictured (right) with Desi Moran from Ewloe Social Club in North Wales. Dave Stenton, from Bramley Social Club, Rotherham was also joint second but not pictured as he had to leave early. Mr Young won £50 while both second place winners won £20.

We still have some places left for the August Race Week, priced at £300 for the six-day break and £160 for a 3-day break. The race meetings are at Catterick, Sedgefield, Thirsk and Redcar.

Full details of these and all other breaks can be found in the panel on this page.



## PRIZE CROSSWORD

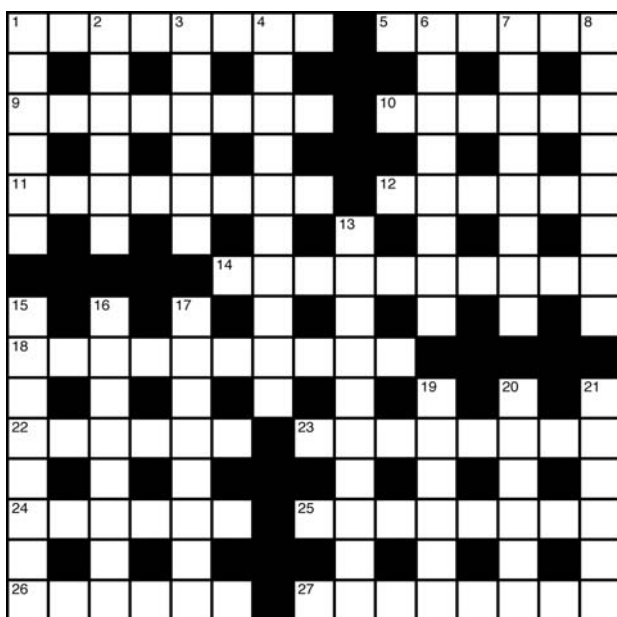
EVERY month we give five £10 prizes to a lucky five correct entrants.

### ACROSS

- 1 Comic is of middling value after company has started. (8)
- 5 Discounts not excluded for sporting tackle. (6)
- 9 Jumper that's mint between head and shoulders. (4-4)
- 10 Angel grooms her cub. (6)
- 11 Veterans - are they ancient, manually? (3,5)
- 12 Bighead to lift stew. (6)
- 14 Honour aims to become pleasant, musically. (10)
- 18 Coir tree is carpentered into writing desk. (10)
- 22 Patio design, to the point of being a drug. (6)
- 23 Renounce tea bag as strangely having heart of the North East. (8)
- 24 Ain't no sense being in such a state. (6)
- 25 Perversely bathes in liqueur. (8)
- 26 Codeine I took desperately to encrypt. (6)
- 27 Innocence of wet grass being spotted? (4-4)

### DOWN

- 1 Pact, or arrangement with the jailer. (6)
- 2 Scottish river said to be not at all harsh, but in tune. (6)
- 3 Accident allowing chip of the tooth. (6)
- 4 An ace chord composed for the one below the bishop. (10)
- 6 Within this place the



Name .....

Address .....

Club .....

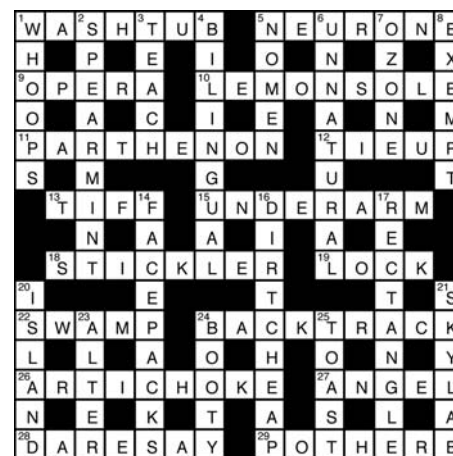
- National Trust is built in. (8)
- 7 Passageway said locally to be Coronation Street's entrance. (8)
- 8 Rub seems inappropriate to put under. (8)
- 13 A-bomb peril, somehow not really credible. (10)
- 15 Speak out against Dennis - a little overweight! (8)
- 16 Hypercritical? Not Harry! - somehow orbital. (8)
- 17 For down-to-earth travel- ling? (4-4)
- 19 Frivolity? Tax has it! (6)
- 20 Dad's attempt at pie topping. (6)
- 21 Mythical story could be afoot! (6)

Send your entry to Crossword, Powdene Publicity, Unit 17, St Peter's Wharf, Newcastle upon Tyne NE6 1TZ, to reach us by July 31.

## CROSSWORD SOLUTION

Congratulations to this month's Prize Crossword winners:

Mrs E Waring of Mablethorpe Club, Lincs; Mr T M Logan of Brookside WMC, Pontefract; Roger Woodward of Cowley Workers Social Club, Oxford; Gordon Thomas of Layton Institute, Blackpool; and Roy Cooper of Chippenham West End Club, Wiltshire.



## NORTHERN RACING

Northern Racing, who operate Bath, Brighton, Chepstow, Fontwell, Ffos Las, Great Yarmouth, Hereford, Newcastle, Sedgefield and Uttoxeter Racecourses, are again offering their £10 across-the-

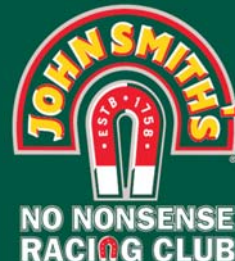
board deal for Grandstand & Paddock tickets throughout 2011.

The offer applies to all meetings except certain feature days like Plate Day at Newcastle.


### Fixtures include:

- |                                |                             |   |
|--------------------------------|-----------------------------|---|
| Tues, Aug 2 Bath               | Fri, Aug 12 Newcastle       | Fri, Aug 26 (eve) Newcastle             |
| Tues, Aug 2 (eve) Ffos Las     | Mon, Aug 15 (eve) Yarmouth  | Sun, Aug 28 Yarmouth                    |
| Wed, Aug 3 Brighton, Newcastle | Tues, Aug 16 Brighton       | Monday, Aug 29 (BH) Chepstow, Newcastle |
| Wed, Aug 3 (eve) Yarmouth      | Wed, Aug 17 (eve) Hereford  | Wed, Aug 31 Bath, Hereford              |
| Thur, Aug 4 Yarmouth           | Sat, Aug 20 (eve) Bath      | Fri, Sep 2 Chepstow, Brighton           |
| Thur, Aug 4 (eve) Chepstow     | Mon, Aug 22 (eve) Hereford  | Sun, Sep 4 Fontwell                     |
| Tues, Aug 9 (eve) Ffos Las     | Tues, Aug 23 Sedgefield     | Mon, Sep 5 Bath, Newcastle              |
| Wed, Aug 10 Yarmouth           | Tues, Aug 23 (eve) Yarmouth | Tues, Sep 6 Sedgefield                  |
| Thur, Aug 11 (eve) Chepstow    | Wed, Aug 24 Chepstow        | Wed, Sep 7 Uttoxeter                    |
|                                | Thur, Aug 25 Ffos Las       | Thurs, Sep 8 Chepstow                   |





# CIU RACING CLUB



To take advantage of the offers fill in the form below and send it to us **THREE WEEKS** before the meeting. **IF WE DO NOT RECEIVE THE BOOKING THREE WEEKS BEFORE WE CANNOT GUARANTEE YOU WILL RECEIVE YOUR DISCOUNT.** To obtain the discount we send all the forms to the racecourse together and they will send you the tickets about a week before the meeting.

Remember all racecourses offer reductions for groups so if the meeting you want to attend is not listed ring the racecourse direct.  
To register your club as a member of the CIU Racing Club ring Jean Garrett on (0191) 265 0040. As well as receiving regular updates you will receive a free copy of *Club Journal*.

**T**HE British Royal Family's long association with racing, which goes back to Charles II, was brought into sharp public focus last month when Her Majesty the Queen's Carlton House was sent off as favourite for the Epsom Derby.

Sadly for Her Majesty – and for members of the Carlton House Club at Olney in Buckinghamshire – the horse finished third behind the French-trained Pour Moi and Treasure Beach, but with next year's Diamond Jubilee celebrations set to kick off at the

in 1952, and in the coronation year of 1953, her horse Aureole finished second in the Derby; it's the closest a horse has come to giving a reigning British monarch victory in the Blue Riband of flat racing since Minoru won for Edward VII in 1909.

Subsequently, the Queen has had a further eight runners in the Derby, namely Landau, Atlas, Doutelle, Miner's Lamp, Above Suspicion, English Harbour, Milford and Church Parade, but none since Aureole has made the winners' enclosure.

The Queen has, however, won all the

## TALKING RACING

### Gavin Smith

# Carlton dismays Queen and club

Derby meeting, and more good horses in training, the Monarch's life-long love of the "Sport of Kings" remains undiminished.

The Queen inherited a string of racehorses when her father, George VI, died

other four domestic Classic races, with Pall Mall landing the 2,000 Guineas in 1958, Highclere the 1,000 Guineas in 1974 and Carozza the 1957 Oaks. The Silver Jubilee year of 1977 was as memorable for the sovereign on the race track as it was off it, with Dunfermline winning both the Oaks and St Leger that year, ridden to victory by Willie Carson for royal trainer Dick Hern.

In recent decades "old money" on the racecourse has very much been eclipsed by "new money", most notably in the shape of another Royal family, this time the Maktoums, rulers of Dubai. Nonetheless, Her Majesty continues to have some 20 horses in training each season, with Sir Michael Stoute, the handler of Carlton House, now the principal royal trainer.

As well as being an owner, the Queen is an extremely knowledgeable breeder of racehorses, visiting the Royal Stud at Sandringham in Norfolk each July, armed with her trusty camera to take photographs of her new crop of foals. She also pays regular visits to see her horses in training and observes her yearlings at the Hampshire stud where they are raised.

If bloodlines are highly significant in racing then they are also of vital importance and influence within the monarchy, and the Queen inherited a love of racing from her father and her mother, with the late Queen Elizabeth, the Queen Mother having a particular passion for National Hunt racing. In that sphere she was a notably successful owner with trainer Peter Cazalet, who won 250 races for Her Majesty between 1949 and his death in 1973.

The Queen Mother also came agonisingly close to winning the Grand National with Devon Loch in 1956, when the royal runner with Dick Francis on board had the race at his mercy before appearing to slip and falter with a mere 100 yards to go. The highlight of her ownership came when Special Cargo won the 1984 Whitbread Gold Cup.

## Race Discounts 2011

(All meetings Tattersalls unless stated otherwise)

LISTED below is a selection of discounts for the rest of 2011. A full list of offers will be sent to registered Racing Club members. Northern Racing fixtures are listed on Page 18.

SALTBURN HOUSE, the Union's holiday and convalescent centre on the north Yorkshire coast is again offering racing breaks. Full details – Page 8.

Satellite racing channel RACING UK is offering all CIU clubs a 30 per cent discount. For further details ring 0870 351 8834.

NEWMARKET: Saturday, July 30 .....	£13 (normally £16)
THIRSK: Saturday, July 30 .....	£12 (normally £14)
MARKET RASEN: Sunday, July 31 .....	£12 (normally £14)
NEWBURY: Sunday, July 31 .....	£11 (normally £15)
HAYDOCK: Friday, August 5 (evening) .....	£11 (normally £20)
ASCOT: Saturday, August 6 .....	£19 (normally £26)
Dubai Duty Free Shergar Cup and concert featuring ten 80s acts including Jason Donovan, Paul Young and Kid Creole.	
HAYDOCK: Saturday, August 6 .....	£12 (normally £22)
NEWMARKET: Saturday, August 6 .....	£13 (normally £16)
REDCAR: Saturday, August 6 .....	£11 (normally £15)
LEICESTER: Sunday, August 7 .....	£9 (normally £16)
NOTTINGHAM: Tuesday, August 9 (evening) .....	£12 (normally £14)
NEWMARKET: Thursday, August 11 .....	£13 (normally £16)
MARKET RASEN: Saturday, August 13 (evening) .....	£14 (normally £16)
NEWMARKET: Saturday, August 13 .....	£13 (normally £16)
RIPON: Saturday, August 13 .....	£12 (normally £15)
SANDOWN: Saturday, August 20 .....	£16 (normally £23)

**PLEASE NOTE BOOKINGS FOR DONCASTER MUST BE MADE DIRECTLY THROUGH THE COURSE. (See their advertisement and quote CIUDON2011).**

BEVERLEY Saturday, August 27 .....	£10 (normally £13)
REDCAR: Saturday, August 27 (evening) .....	£11 (normally £15)
ASCOT: Saturday, September 3 .....	£11 (normally £17)
HAYDOCK: Saturday, September 3 .....	£12 (normally £22)
THIRSK: Saturday September 3 .....	£12 (normally £14)
NEWBURY: Saturday, September 17 .....	£14 (normally £18)
NEWMARKET: Saturday, September 17 .....	£13 (normally £16)
HAYDOCK: Saturday, September 24 .....	£11 (normally £20)
MARKET RASEN: Saturday, September 24 .....	£14 (normally £16)
RIPON: Saturday, September 24 .....	£12 (normally £15)
ASCOT: Friday, September 30	
Autumn Meeting including Beer Festival .....	£6 (normally £12)
ASCOT: Saturday, October 1	
Autumn Meeting including Beer Festival .....	£11 (normally £17)
NEWMARKET: Saturday, October 1 .....	£13 (normally £16)
REDCAR: Saturday, October 1 .....	£11 (normally £15)
YORK: Saturday, October 8 .....	£13 (normally £17)
ASCOT: Saturday, October 15 .....	£19 (normally £26)

## CIU Racing Club Booking Form

Number of tickets required (minimum 6) \_\_\_\_\_ Price per ticket £ \_\_\_\_\_

Racecourse \_\_\_\_\_ Date of meeting: \_\_\_\_\_

Cheque enclosed for £ \_\_\_\_\_  
(Made payable to racecourse involved).

Club: \_\_\_\_\_

Club Address: \_\_\_\_\_

\_\_\_\_\_ Post code: \_\_\_\_\_

Contact Name: \_\_\_\_\_

DAYTIME telephone No: \_\_\_\_\_

Please send this booking form plus cheque  
(made payable to the appropriate racecourse) at least three weeks prior  
to meeting to: Jean Garrett, Club Journal,  
**UNIT 17, ST. PETER'S WHARF, NEWCASTLE UPON TYNE NE6 1TZ.**

Get together at  
Doncaster  
Racecourse!



BOOK  
EARLY

CIU RACING  
PACKAGE  
**HALF  
PRICE\***

GRANDSTAND  
ADMISSION FROM  
JUST £6.25 EACH!

BOOK  
NOW

CALL OUR  
SALES TEAM  
AND QUOTE  
CIUDON2011

\* Race dates excluded from the offer: 14th May '11, 25th June '11, 13th Aug. '11, 8th Sept. '11 and 10th Sept. '11



Or call us now on  
**01302 304 200**  
www.doncaster-racecourse.co.uk



# SUMMER OF FINALS LINED UP



**BRIAN** Yerkess of Rishton Free Gardeners Club has pulled off an unusual double by winning both the Blackburn Federation dominoes championship and the Manchester Branch bowls title. He is pictured with both trophies.

OUR individual Snooker Championship final will be between Michael Rhodes of Ferryhill Club, Co. Durham and Ian Sargent of Bargoed Labour Club, South Wales.

In the first semi-final on June 4 at Barnby Dun Social Club, Doncaster Rhodes beat Dave Portman of Chapeltown WMC, Sheffield 4-0.

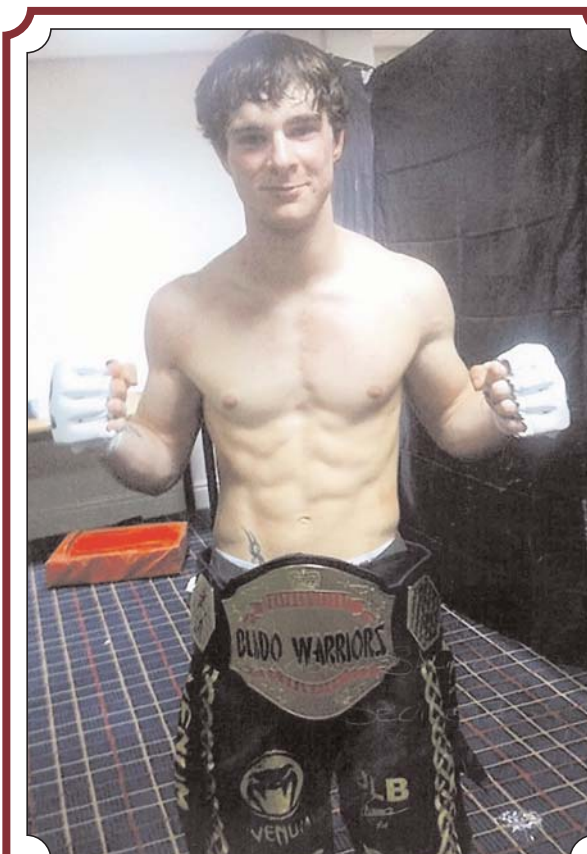
In the other semi-final at Wotton Hall Club, Gloucester on June 11 Sargent beat Jamie Brown of Selly Oak Ex-Servicemen's Club 4-1. The final will be played on August 13 in the Leicester Area.

The **Individual Billiards** final will be played at Alvaston & Crewton Men's Club in Derby on July 23 between Bill Bousefield (Buffs Social Club, Stockton-on-Tees) and Martin Goodwill (Gladstone Road Club, Wiltshire).

The **Team Pool** final was being played on 2 July between Easington Colliery Club, Co. Durham and Twyn-Y-Ffald WM, Monmouthshire at Grassmoor WMC, Chesterfield.

The **Team Snooker** final will be played on 16 July between High Howdon Social Club, Tyneside and Twyn-Y-Ffald WMC at Mansfield Woodhouse Ex-Service Club, Notts.

The **Team Darts** final will be played on August 6 between Bannockburn Miners, Stirling and Grovesend Miners, Swansea at Bloomfield Club, Blackpool.



MILD-mannered barman Grant Worthing has surprised members of Risca WMC near Newport – by winning the British Featherweight title for the Budo Warriors mixed martial arts.

On the finals night in Bolton, Grant won his semi-final on a unanimous points decision, a fight

## The quiet champ

that was voted fight of the night. He went on to win the final with a second round stoppage.

"Members including myself were more than surprised by Grant's achievement because he is well mannered and very quiet behind the bar, not to say modest," said Club Secretary Roger Salmon.

## CRAM YOUR CLUB WITHOUT A SKY PACKAGE\*

THANKS TO RACING UK!

30% DISCOUNT FOR CIU MEMBERS

RACING UK

PURE RACING ENTERTAINMENT

www.racinguk.com/business

CALL 0870 351 8834 TO SUBSCRIBE

\*Terms and conditions apply. No Sky contract required, just satellite viewing equipment.



Picture: Evening Chronicle, Newcastle

## Kenny's from heaven

GEORDIE football coach Mark Keall has received a very special message – from Liverpool legend Kenny Dalglish.

Mark has coached the Felling Magpies, based at Stormont Main Working Men's Club for over a decade. Despite being Gateshead born and bred, he has supported the Reds all his life and is even known as Scouse.

So when he decided to retire from coaching the under-14s because of work and family commitments the

club wrote to the Liverpool boss and he responded with a leaving card.

Football Club secretary Ritchie Jones said "We didn't know if we'd get anything back at all, so we were really surprised to get a whole leaving card, written out and signed by Kenny Dalglish". The card reads: To Mark, best wishes, From Kenny Dalglish.

Mark is pictured (right) holding a Felling Magpies shirt signed by all the players and staff with Assistant Coach John Maylia.